

Effect of nutrition education by health professionals on pregnancy-specific nutrition knowledge and healthy dietary practice among pregnant women in Asmara, Eritrea: a quasi-experimental study

Lidia Ghirmai Teweldemedhin ,¹ Helen Gebretatyos Amanuel,² Soliana Amanuel Berhe,³ Ghidey Gebreyohans,³ Zemenfes Tsige,³ Eyasu Habte³

To cite: Teweldemedhin LG, Amanuel HG, Berhe SA, *et al.* Effect of nutrition education by health professionals on pregnancy-specific nutrition knowledge and healthy dietary practice among pregnant women in Asmara, Eritrea: a quasi-experimental study. *BMJ Nutrition, Prevention & Health* 2021;4:e000159. doi:10.1136/bmjnph-2020-000159

► Additional supplemental material is published online only. To view, please visit the journal online (<http://dx.doi.org/10.1136/bmjnph-2020-000159>).

For numbered affiliations see end of article.

Correspondence to

Ms Lidia Ghirmai
Teweldemedhin, Nursing,
Orota School of Medicine and
Dentistry, Asmara 5208, Eritrea;
LidiaGhirmai94@gmail.com

Received 1 September 2020
Revised 13 March 2021
Accepted 18 March 2021
Published Online First
15 April 2021



© Author(s) (or their employer(s)) 2021. Re-use permitted under CC BY-NC. No commercial re-use. See rights and permissions. Published by BMJ.

ABSTRACT

Background Healthy pregnancy and birth outcomes are greatly influenced by the intake of adequate and balanced nutrition. Pregnant women's nutritional knowledge and practice have been identified as an important prerequisites for their proper nutritional intake. The antenatal period with the opportunities for regular contact with health professionals appears to be the ideal time and setting to institute the intervention which could maximise pregnant women's outcome and that of their baby by motivating them to make nutritional changes.

Objective To assess the effect of nutrition education on the appropriate nutritional knowledge and practice of pregnant women.

Methodology A facility-based single-group pre–post quasi-experimental study design was employed in five health facilities providing antenatal care (ANC) service in Asmara on 226 pregnant women. A predesigned and pretested questionnaire was used to collect data regarding nutritional knowledge via interview by trained data collectors during the pretest, immediate post-test and 6 weeks later. The practice was assessed at pre-intervention and 6 weeks later only. Repeated measures analysis of variance and paired t-test were used to make comparisons in knowledge and practice scores, respectively, using SPSS (V.22).

Results Training provided to pregnant women resulted in a significant increase on the mean scores of their knowledge from 29.01/47 (SE=0.35) pre-intervention to 42.73/47 (SE=0.24) immediate post-intervention. However, the score declined significantly from immediate after intervention to 6-week follow-up by 1.79 (SE=0.22). Although the score declined, knowledge at 6-week follow-up was still significantly greater than that of pre-intervention ($p<0.0001$). Health professionals (70.2%) were the primary source of information for pregnant women. The pregnancy-specific dietary practice score at 6-week follow-up (M=13.13/16, SE=0.09) was significantly higher than that of pre-intervention (M=12.55/16, SE=0.16). There was no significant interaction between the categories of

What this paper adds

- Timely provided nutrition education and counseling
- Trained Antenatal care providers Change in pregnant women's nutritional knowledge and dietary behavior
- Improvement in maternal and child health

demographic characteristics and change in practice and knowledge.

Conclusion This study has shown that the nutrition messages given to pregnant women by trained health professionals using a holistic approach in a sustained manner played a huge role in increasing their knowledge and in introducing positive dietary practices among them. Thus, ANC clinics must play a leading role in coordinating the effort of awareness creation regarding nutrition during pregnancy.

BACKGROUND

Nutrition is a central and fundamental pillar of human life that is required for health and development throughout the entire life span in general and during pregnancy in particular.¹ A pregnancy diet which is sufficient in energy, with a variety of nutrients, minerals and vitamins, and the mother's avoidance of toxins and contaminants is important to ensure health for the mother and the growing fetus.^{2–7} In addition to that, poor quality diet during pregnancy has been found to be associated with unhealthy maternal weight gain, preterm birth, anaemia and low birthweight (LBW) babies which grow and develop less well and have poorer chance of survival than normal birthweight babies.^{2–7}

Adequate and balanced nutrition during gestation has been recognised as a prerequisite for a healthy pregnancy and birth outcomes

and this is significantly determined by their nutritional knowledge and practice.^{5–10} The WHO recognised the impact of nutrition in pregnancy and recommends that antenatal care (ANC) providers should provide adequate, specific and acceptable nutrition-related advice to their clients during every visit of antepartum. It is well studied that education holds a key factor in health promotion. Though knowledge is not behaviour, it determines the dietary behaviour. Hence, the antenatal period with the opportunities for regular contact with health professionals appears to be the ideal time and setting to institute the intervention which could motivate mothers to make changes that could maximise their outcome and that of the baby.^{2,11}

Protein energy undernutrition and micronutrient deficiency have been associated with infant and maternal mortality, and Eritrea is no different from the many countries suffering from infant and maternal mortality. Eritrean Demographic Health Survey of 2002 came up with 2% of women, who are shorter than 145 cm, the cut-off point below which a woman is said to be at risk of giving birth to an LBW baby. It also indicates that 37% of women aged 15–49 years have a low body mass index indicating chronic energy deficiency.¹² Despite that fact, it is not uncommon to observe women to eat less during pregnancy to avoid fatty babies and so to prevent difficult delivery.¹³ A section from Eritrean Population Health Survey (EPHS) 2002 also showed that only 4 in 10 mothers received iron tablets but almost all took the tablets for less than 60 days despite a 55% prevalence of anaemia among pregnant women, although the 2010 EPHS showed a 57.3% rate of iron consumption among pregnant women within their last birth.^{14,15} Such observation was also witnessed in several other countries where men are given more food than women due to a belief that men need more food because they work harder. Moreover, it is true that misconceptions and food taboos governing pregnancy still exist. This was due to the belief that certain food items will be plastered on the fetal head, fear of abortion, fatty baby and stillbirth.^{13,16}

This study thus aimed at filling the gap of studies on the effect of educating pregnant women about pregnancy-specific nutrition on their appropriate nutritional knowledge and practice. The attainment of satisfactory knowledge and practice can ultimately result in adequate maternal diet, optimal maternal weight gain and positive infant outcomes such as satisfactory birth weight. The study will also serve as a baseline for studies and programmes working on interventions to improve national and global nutrition status of pregnant women. The intervention of this study, training and nutrition education (NE) at the ANC, and materials used can also be duplicated to cover the gap of NE in the area and the country as a whole. This research basically employed the Health Belief Model which is based on the premise that people are most likely to take health-related action (eg, eat a healthy diet), if they feel that by doing so they can avoid a negative health condition.

METHOD

Design and study place

A facility-based single-group pre–post quasi-experimental study design was employed from July to September of 2018 in Asmara, the capital city and largest settlement in Eritrea. According to the Municipality of Asmara, there are a total 114640 households in the city and it is home to a population of around 416367 people with 227337 of them being women.

Study population

There are 18 health facilities in Asmara out of which 17 provide ANC service. Of these 3 are health centres, 3 are community hospitals and 11 are health stations. The community hospitals have a catchment population of around 50000 and they provide service for more than three subzones. There are approximately 59 healthcare providers in the facilities. The health facilities which provide ANC service are geographically located in four subzones: Northern West Asmara, Northern East Asmara, Southern West Asmara and Southern East Asmara. The geographical regions along with their corresponding health facilities are shown in [table 1](#) (online supplemental table 1). First and second trimester pregnant women who were attending ANC in the health facilities during the study period were the study population.

Sample size

Sample size was calculated using a G-power V.3 calculator using a test family of t-test. Difference between two dependent means (matched pairs) technique was used with an effect size of 0.2, with actual power and level of significance of 0.80 and 0.05, respectively. The sample size calculated was 199. Considering 10% dropout from follow-up, a final sample of 220 was determined.

Sampling technique

Stratified random sampling was used to select the study participants. The four geographical regions/subzones are considered as strata because of the similarity of the pregnant women within each subzone and differences of the pregnant women in one region/subzone with another one. Hence, each region contributed one health facility to bring about representative pregnant women from the four subzones, except in Southern West Asmara in which two health facilities were taken. The randomly selected health facilities from each subzone along with the number of pregnant women who visited the selected health facilities and samples taken are shown in [table 2](#) (online supplemental table 2). The allocation of pregnant women in the four regions of the health facilities was done proportionally based on the number of clients who visited the ANC clinic on the same month (August) of the previous year. Then the ANC clients from each selected health facility were identified systematically. To identify the interval, the total number of ANC clients was divided by the total sample size. The kth value is 2. The first woman was selected by lottery method and then every second woman

Table 1 Demographic characteristics of the study participants (n=215)

Variable	Frequency	Per cent
Marital status		
Married	198	92.1
Single	16	7.4
Divorced	1	0.5
Educational level		
Junior or below	50	23.2
Secondary education	135	62.8
College/university level	30	14.0
Partner's educational level*		
Junior or below	32	14.9
Secondary education	131	60.9
College/university level	36	16.7
Current occupation		
Housewife	144	67.0
Government employee	32	14.8
Private employee	35	16.3
Unemployed	4	1.9
Religion		
Orthodox	170	79.1
Protestant	6	2.8
Catholic	2	0.9
Muslim	37	17.2
Frequency of ANC visits		
One	111	51.6
Two	52	24.2
Three	32	14.9
Four or more	20	9.3
	M (SD)/Md (IQR)	Min, Max
Age	27.71 (5.15)†	15, 44
Gestational age	22.0 (9.0)‡	6, 28
Gravidity	2.00 (3.0)‡	1, 12
Parity	1.00 (3.0)‡	0, 10
Family size	3.0 (3.0)‡	1, 7+
Family income	1500.0 (1400.0)‡	0, 16000

*Partners' educational level is not assessed for pregnant women who are single.

†Mean (SD) is used,

‡Median (IQR) is used.

ANC, antenatal care; Max, maximum value; Min, minimum value.

visiting the health facility was selected for the study. The immediately next woman was used if the woman refuses to participate in the study. To prevent redundancy of respondents, identity mark was put on their ANC card.

Inclusion and exclusion criteria

Pregnant women who were in their first and second trimester of pregnancy and willing to participate in the

study were included. However, pregnant women who were sick at the time of the study and those who cannot communicate verbally were excluded from the study.

Intervention

In the context of health education programme, an educational intervention was developed by the research team based on a training module. It was then reviewed by nutrition experts from the college and Ministry of Health (MOH) for its appropriateness and adequacy. The content included introductory messages and focused on meanings of healthy diet, eating a variety of food, sources of the main food groups and micronutrients, eating well with the locally available food, hazards of maternal malnutrition, important supplements to be taken during pregnancy, harmful substances to be avoided, gestational weight gain and measures of alleviating common discomforts associated with nutrition during pregnancy. The training module on nutrition counselling for health professionals providing ANC service is annexed and is attached as a supporting material.

The training programme was carried out in the form of counselling using printed materials and flip charts for pictorial representation. Self-reading of leaflets containing the core messages for every topic prepared in the native language of the participants was also employed as the women in the study had one each. The intervention was implemented in one session taking a minimum of 20 min while pregnant women were receiving their routine ANC care. Incentives for participants in order to increase compliance or adherence were not employed. The educational intervention was given by health professionals who were given a 2-day manual-based training regarding nutrition during pregnancy and 'GATHER' counselling skill. The training used presentation, drills, discussions and role-play as a method. Health professionals' knowledge and counselling skills were assessed after the training to make sure they have acquired the necessary knowledge and skills required to implement the intervention (not shown in this study).

Data collection tools and techniques

A questionnaire sheet used in this study was prepared by reviewing an Ethiopian study done on a similar topic.⁵ The tool was modified and finalised to fit the local context. The questionnaire had three sections. Section I dealt with the background and locating information which also included their gravidity and ANC follow-up. The knowledge questionnaire had 14 questions to assess the knowledge level of pregnant women. There were 21 open-ended and closed-ended questions that assessed the dietary practice of pregnant women including a list of food items consumed in the past 24 hours. The quantitative data which is the knowledge and practice questionnaire was administered via a face-to face interview method after the participants were informed briefly about the study and their written consents were obtained. Five professionals who have Bachelor of Science in Nursing

Table 2 Percentage distribution of correct knowledge parameters of nutrition during pregnancy among pregnant women at pre-intervention, immediate post-intervention and 6 weeks later (n=215)

Knowledge components	Pre-intervention n (%)	Immediate post- intervention n (%)	6-week follow-up n (%)
Eating a variety of food without avoiding food	169 (78.6)	215 (100.0)	215 (100.0)
Eating an additional one meal	131 (60.9)	212 (98.6)	213 (99.1)
Frequent feeding	89 (41.4)	215 (100.0)	208 (96.7)
Usage of iodised salt during pregnancy	188 (87.4)	215 (100.0)	215 (100.0)
Fetal complications of undernutrition	207 (96.3)	215 (100.0)	215 (100.0)
Maternal complications of undernutrition	195 (90.7)	215 (100.0)	215 (100.0)
Duration of iron supplementation	86 (40.0)	210 (97.7)	202 (94.0)
Necessity of supplementation because of inadequacy of nutrients in foods	184 (85.6)	214 (99.5)	214 (99.5)
Effect of maternal undernutrition on fetal weight	195 (90.7)	215 (100.0)	215 (100.0)

for data collection and two clinical nurses for the purpose of supervising the data collection period were trained for 3 days on the overall research objective and methodology, data collection tools, interviewing and recording skills. Strict instructions on consistency and completeness of the tool were also given. Informed consent sheet and questionnaire are annexed and are attached as supporting materials.

Data collection procedure

Phase I of the data collection from the pregnant women (baseline assessment) using a questionnaire immediately before receiving nutrition counselling from their ANC providers took place from 31 July to 9 August. Health professionals then started providing NE to pregnant women preselected and assessed before the intervention. Immediate post-education evaluation of the pregnant women was done by the same questionnaire used to assess in the pretest. Phase II or post-intervention data collection of pregnant women was done after the client was appointed for 6 weeks after the counselling session and this took place from 12 September to 24 September. Recruitment of participants, intervention and data collection were all done in the ANC settings of the health facilities. The set-up of the ANC clinics in some of the health facilities was modified in a way that the participant of the study was to be counselled alone.

Validity

The face and content validity of the data collection instruments was ensured as the tool was reviewed by nutrition experts from the MOH, clinical nurses and advisors from the college. Considering their suggestions and recommendations, the tool was modified and finalised to fit the local context. The questionnaire was translated to Tigrigna by local language expert and then back to English by another person in order to check for consistency between the two translations.

Reliability

The data collectors were given strict guidance on how to fill the knowledge and practice questionnaires and observe the participants so as to avoid the inter-rater biases.

Study outcomes and measures

The two outcome variables in this study were the knowledge level of pregnant women on nutrition and their appropriate nutrition-related practice after intervention. Composite scores of knowledge and practice of each pregnant woman were computed. Mean scores of the knowledge (at pre-intervention, immediate post-intervention and 6 weeks later) and practice (at pre-intervention and 6 weeks later) of pregnant women were then calculated. The pregnancy-specific NE was the independent variable in this study. Covariables on ANC clients were age, gravidity, parity, gestational age, number of ANC visits, educational status of the woman and the husband, marital status, religion, occupational status, family size and income, source of information and frequency of ANC visits.

Data analysis procedures

The cleaned data were coded and entered into SPSS V.22.0. Normality of the entered data was checked with Kolmogorov-Smirnov test and Fisher's measures of skewness and kurtosis. Descriptive analysis of the sociodemographic and other covariates was done using frequencies (percentages), mean (SD) and median (IQR) as appropriate. In order to make comparison of the overall practice scores at two time points, paired t-test was used. Comparison of knowledge scores at three time points was performed using repeated measures analysis of variance (ANOVA) followed by Bonferroni post hoc test. Factorial mixed ANOVA was used to determine effectiveness of health education on nutrition knowledge and practice during pregnancy through categories of sociodemographic variables. Finally, the results were presented

Table 3 Effect of educational intervention on scores of knowledge regarding nutrition during pregnancy (n=215)

Time	Mean (SE)	Min, Max	Wilk's lambda (p value)	Mauchly's sphericity (p value)	Trend (partial eta squared)
Before intervention	29.01 (0.35)	17, 43	0.088	<0.0001	Quadratic (0.892)
Immediate after	42.73 (0.24)	33, 48	(<0.0001)		
6-week follow-up	40.94 (0.26)	30, 48			

Max, maximum value; Min, minimum value.

using tables and graphs. A statistical significance was considered at p value of less than 0.05 except for the Box M p value of less than 0.001.

RESULTS

A total of 230 pregnant women were approached to participate in the study according to the eligibility criteria. Four were excluded as they did not consent to be part of the study so a total of 226 were enrolled in the study and all were successfully followed to the immediate interview. Eleven women lost to follow-up and 215 completed the assessment at the 6 weeks' time, making them the final participants for the study whose data are taken for analysis. Hence, the response rate was 95.2%. A Consolidated Standards of Reporting Trials flow chart showing subjects initially enrolled, intervened, followed up and included in the analyses in the quasi-experimental study is attached as supporting information (online supplemental material S2).

Demographic characteristics of the study participants

As shown in table 3, the mean age of pregnant women was 27.71 (SD=5.10) years and the age range was 15–44 years with the larger proportion (n=72, 33.5%) of them being in the age group 25–29 years. One hundred forty-four (67%) of the pregnant women were housewives, 135 (62.8%) had an educational attainment of secondary level, 198 (92.1%) are currently married and 170 (79.1%) were Orthodox Christians. Concerning their partner's educational status, 131 (60.9%) have completed secondary education. The study participants had a median family

size of 3 and a median monthly household income of \$100. When looking at their obstetric history, 74 (34.4%) were experiencing pregnancy for the first time, 86 (40%) were nullipara and 111 (51.6%) were coming for their first ANC follow-up for their current pregnancy. The median gestational age of ANC attendants was 22, with the majority (86%) of them being in their second trimester.

In this study as indicated in figure 1, 177 (82.3%) received nutritional counselling and for 70.2% of those who did so, a doctor, nurse and midwife were the source of information. The least mentioned source of information was friends (12.6%). From those who claimed to have received nutrition counselling, 122 (55.8%) confirmed that they got enough information from their sources to enable them to make decisions concerning their nutritional status. Less than half (n=78, 36.3%) thought the information they received was inadequate. The minority was not sure if the information they received was adequate or not.

Knowledge on appropriate nutrition during pregnancy among pregnant women

The result showed in table 4 illustrates the proportion of women who correctly responded to the knowledge questions regarding nutrition during pregnancy. More than three-fourths of the pregnant women (78.6%) had the perception of having to eat a variety of food throughout pregnancy, while 11.5% believed that they should avoid certain food items. Spicy food (3.3%) and meat (1.4%) were the most common food items thought to be avoided. After intervention, none of the respondents had the idea

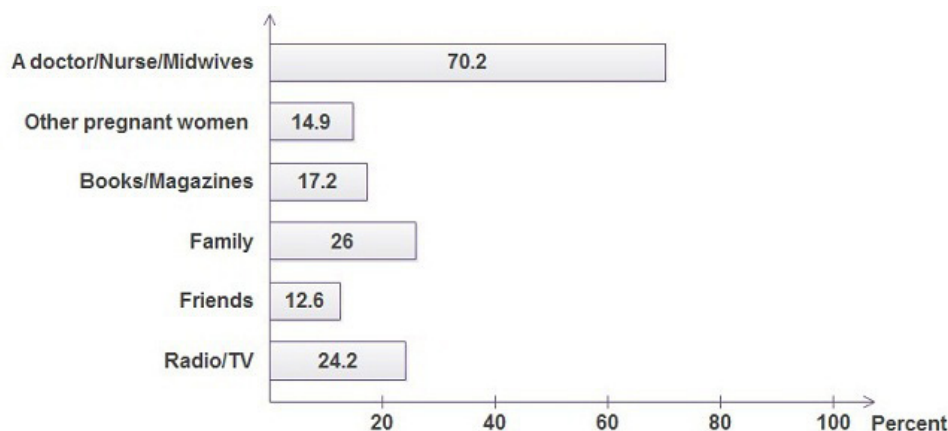


Figure 1 Percentage distribution for the sources of information on nutritional counselling.

Table 4 Pair-wise comparison of scores of knowledge of nutrition during pregnancy at pre-intervention, immediately after and 6-week follow-up (n=215)

Time 1 versus time 2	Md (SE)	P value
Immediate after intervention versus before intervention	13.72 (0.30)	<0.0001
Follow-up 6 weeks versus before intervention	11.93 (0.37)	<0.0001
Immediate after intervention versus follow-up 6 weeks	1.79 (0.22)	<0.0001

that a pregnant woman should eat only what she craves or avoid certain food items. This was still true 6 weeks later.

Correct knowledge on eating an additional one meal increased from 131 (60.9%) to 212 (98.6%) in the immediate assessment, and to 213 (99.1%) 6 weeks later. The number of respondents who voted for frequent feeding during pregnancy increased from 89 (41.4%) to 215 (100%) in the immediate interview though it declined to 208 (96.7%) after 6 weeks.

Use of iodised salt during pregnancy was known by 188 (87.4%) of the participants and after intervention it was known by all. Only 86 (40%) of the study participants correctly answered the duration of iron supplementation but a higher proportion of respondents (97.7%, 94%) correctly did so at the consecutive follow-ups. Of the study participants, 207 (96.3%) and 195 (90.7%) knew maternal undernutrition would bring fetal and maternal complications, respectively. As far as the result is concerned in the immediate and 6 weeks later, it got elevated to 100% in both components. Knowledge regarding necessity of supplementation because of inadequacy of nutrients in foods increased from 184 (85.6%) at the pre-intervention time to 214 (99.5%) at the immediate post-intervention and again to 214 (99.5%) in the 6 weeks' time. Effect of maternal undernutrition on fetal weight was correctly known by 195 (90.7%) at the pre-intervention assessment and was correctly known by all at both consecutive times.

Regarding the main food group source questions offered to the respondents, only 15.8% and 40.5% correctly listed millet and fruits as sources of carbohydrate. This was elevated to 75.3% and 64.2%, respectively, in the immediate assessment. The majority (70.7%, 95.8% and 92.6%) of the respondents correctly described legumes as a source of carbohydrate in the pre-intervention, immediate post-intervention and 6 weeks later, respectively. The same food items were described as sources of proteins by only a quarter of the respondents but after the intervention it rose to 73% and declined to 67.9% in the 6 weeks' time. Meat and fish (82%, 96.7% and 95.8%) were the most familiar food items mentioned as sources of proteins at all times of assessment. Sunflower (17.2%), soya bean (3.7%), and maize, cereals and adri (8.4%) were the least familiar food sources of fats. Fatty meat, milk and cheese were only missed by 22.3% of the respondents as a source of fat prior to the intervention but only

3.7%, 2.3% got it wrong in the consecutive assessments. Fruits and vegetables were known by 87% and 74% of the participants as food sources of vitamins in the pre-intervention time. Their values were elevated to 99.1%, 98.6% in the immediate assessment and to 98.6%, 97.2% 6 weeks later, respectively.

Fenugreek was mentioned as a good source of iron by only 24.7% of the study participants while the other sources, meat (42.8%), fish (44.7%), egg yolk (45.6%), green vegetables (40.0%), legumes (36.3%) and fruits (28.4%) were known to a greater extent by the participants in the pre-intervention assessment. The earlier mentioned source became more popular after the educational intervention (89.8%).

Effect of educational intervention on knowledge of nutrition during pregnancy

The average knowledge scores at pre-intervention, immediate after intervention, and 6 weeks later were 29.01/47 (SE=0.35), 42.73/47 (SE=0.24) and 40.94/47 (SE=0.26), respectively, as shown in table 5. Mauchly's sphericity result has shown that variance of the difference of scores for any two conditions is not violated ($p < 0.0001$). Moreover, Wilk's lambda revealed that there was significant effect for time (Wilk's lambda=value, $p < 0.0001$). Using the commonly used guideline of Cohen, the partial eta squared suggested that there was a very large effect size. The overall trend of the knowledge regarding nutrition during pregnancy at the three time points was quadratic.

Post hoc comparisons using Bonferroni test in table 6 indicated that the average knowledge score at pre-intervention, immediately after intervention and 6-week follow-up was significantly different. On average, the score increased by 13.72 (SE=0.30) from before the intervention to immediate after intervention. However, the score declined significantly from immediate after intervention to 6-week follow-up by 1.79 (SE=0.22). Although there was significant decrease in score from immediate after to 6-week follow-up, knowledge at 6-week follow-up was still significantly greater than that of pre-intervention ($p < 0.0001$).

Effectiveness of the intervention on knowledge by demographic variables

Factorial mixed ANOVA (table 7) was conducted to assess the impact of the educational intervention on the scores of knowledge across three time periods by age, gravidity, parity, gestational age, marital status, woman's and husband's educational status, occupation and number of ANC visits. There was no significant interaction between the above-listed characteristics and change in knowledge except with gravidity (Wilk's lambda=0.957, $p = 0.01$). The educational intervention has shown more positive impact on increasing the scores regarding knowledge of appropriate nutrition during pregnancy for primigravida mothers than for the multi-gravida mothers.

Table 5 Effectiveness of the intervention by demographic variables on knowledge (n=215)

Characteristics	Pre-intervention	Immediate post-intervention	6-week follow-up	Box M p value	Wilk's lambda	P value
	M (SD)	M (SD)	M (SD)			
Age						
15–19	24 (4.9)	39 (3.53)	39.8 (3.42)	0.950	0.951	0.386
20–24	28.2 (5.15)	42.8 (3.25)	41.07 (3.57)			
25–29	28.9 (5.04)	42.45 (3.74)	40.56 (3.92)			
30–34	29.4 (5.05)	42.83 (3.35)	41.15 (4.10)			
35–39	31.4 (4.24)	43.79 (2.26)	41.7 (3.68)			
40–44	30.34 (5.5)	43.34 (6.42)	39.67 (3.05)			
Gravidity						
Primigravida	28.31 (5.22)	43.19 (3.53)	41.70 (3.64)	0.332	0.957	0.01
Multigravida	29.38 (5.00)	42.48 (3.38)	40.54 (3.84)			
Parity						
Nullipara	28.48 (5.19)	43.02 (3.44)	41.45 (3.75)	0.255	0.962	0.221
Primipara	28.87 (5.01)	42.71 (3.45)	40.6 (3.8)			
Multipara	29.37 (4.6)	42.19 (3.38)	40.47 (4.05)			
Grand multipara	30.42 (6.04)	43 (3.66)	40.95 (3.16)			
Gestational age						
1st trimester	28.37 (4.9)	43.67 (3.19)	41 (4.69)	0.426	0.966	0.26
2nd trimester	29 (1.2)	42.57 (3.47)	40.93 (3.65)			
Marital status						
Married	29.14 (4.98)	42.81 (3.38)	40.96 (3.81)	0.627	0.992	0.407
Single	26.87 (5.86)	41.5 (4.04)	40.5 (3.67)			
Woman's educational status						
Junior and below	27.7 (5.35)	42.06 (3.7)	40.24 (3.98)	0.668	0.992	0.79
Secondary	29.34 (4.87)	42.86 (3.37)	41.02 (3.84)			
College/university level	29.67 (5.38)	43.24 (3.29)	41.74 (3.18)			
Husband's educational level						
Junior and below	29.4 (4.84)	43.25 (2.6)	41.56 (3.4)	0.468	0.99	0.759
Secondary	28.79 (4.78)	42.61 (3.54)	40.67 (3.99)			
College/university level	30.17 (5.73)	43.0 (3.47)	41.3 (3.52)			
Occupation						
Housewife	28.59 (4.74)	42.43 (3.44)	40.59 (3.8)	0.551	0.984	0.75
Government employee	30.81 (5.6)	43.94 (2.95)	42.19 (3.03)			
Private employee	29.14 (5.46)	42.86 (3.35)	41.54 (4.27)			
Unemployed	28.75 (8.43)	42.5 (6.46)	38.5 (2.52)			
Number of ANC visits						
One	28.19 (5.02)	42.56 (3.38)	41.05 (3.58)	0.821	0.937	0.133
Two	29.14 (4.78)	42.37 (3.59)	40.62 (4.11)			
Three	30.09 (5.4)	43.06 (3.12)	41.15 (4.11)			
Four or more	31.5 (4.94)	44.05 (3.79)	40.8 (3.91)			

ANC, antenatal care.

Practice of appropriate nutrition during pregnancy among pregnant women

Higher proportion of pregnant women changed their practice of pregnancy-related diet in adding an extra meal (from 69.3% to 97.2%), eating two servings of green leafy vegetables (from 56.7% to 81.4%) at 6 weeks later as compared with the pre-intervention

time (table 8). The majority were in line with consuming two to three servings of meat, fish, nuts or legumes per day at the pre-intervention (64.2%) and 6 weeks later (80.9%) assessments, respectively. Similarly, the proportion of pregnant women eating two to three servings of dairy (milk, eggs, yoghurt and cheese) per day at pre-intervention and 6 weeks' time

Table 6 Percentage distribution of correct practice of nutrition during pregnancy among pregnant women (n=215)

Nutrition practice specific to pregnancy	Pre-intervention n (%)	6-week follow-up n (%)
Addition of at least one meal from non-pregnant diet	149 (69.3)	209 (97.2)
Number of meal times a day	119 (55.3)	188 (87.4)
Not skipping meals	158 (73.5)	210 (97.7)
Serving meals alone	39 (18.1)	48 (22.3)
Eating 2–3 servings of meat, fish, nuts or legumes per day	138 (64.2)	174 (80.9)
Eating 2–3 servings of dairy (milk, eggs, yoghurt and cheese) per day	125 (58.1)	185 (86.0)
Eating 2 servings of green vegetables; 1 serving of a yellow vegetable per day	122 (56.7)	175 (81.4)
Eating 2–3 servings of fruit per day	159 (74.0)	191 (88.8)
Eating 3 servings of whole grain breads, cereals or other high-complex carbohydrates	211 (98.1)	214 (99.5)
Usage of iodised salt	211 (98.1)	215 (100.0)
Taking 7 iron supplement tablets in the past week	186 (86.5)	182 (84.7)
Smoking avoided	215 (100.0)	215 (100.0)
Alcohol avoided	204 (94.9)	214 (99.5)
Decreasing coffee use	153 (71.2)	202 (94.0)
Non-avoidance of one or more food type during pregnancy	157 (73.0)	200 (93.0)

assessment were 58.1% and 86%, respectively. Almost all (98.1%) reported using iodised salt for cooking in their current pregnancy, this figure later increased to 100% 6 weeks later.

When pregnant women were asked about the food items they consumed in the last 24 hours, more than half (66.5%) of them had bread in their breakfast and for 76.3% of them, injera (injera is a sour flatbread used in Ethiopian and Eritrean cuisine that is thicker than a crepe but thinner than a pancake and has a delightfully sour taste) was included in their diet. Less than half (32.6%) had meat for lunch.

The majority (87.4%) of pregnant women started eating four times and above after the education. A slight increase was observed in the practice of serving meals alone due to intervention (from 18.1% to 22.3%), the rest were still sharing their plate with their family members. Fifty-seven (26.5%) pregnant women were skipping meals but after intervention the number decreased to 2.3%. Dinner was

the commonly skipped meal at both pre-intervention and 6 weeks later (12.6% vs 1.4%).

The adherence of pregnant women to iron supplement tablets decreased from 86.5% at pre-intervention to 84.7% after the intervention. Reasons as per their response for not adhering to iron supplements were poor supply (31.8%), side effects (36.4%) and inability to remember (31.8%). None of the participants were smokers, 204 (94.9%) reported avoiding alcohol and 153 (71.2%) decreased their coffee consumption during their current pregnancy. Even more (n=202, 94%) decreased their coffee consumption after the intervention.

Fifty-eight (27%) participants have avoided one or more food types in their current pregnancy but after intervention only 15 (7%) had the same practice. The most frequently avoided foods were meat (14% vs 1.9%), grains (6% vs 2.3%), dairy products (7.4% vs 0.9%), spicy foods (4.2% vs 1.9%), vegetables (1.9% vs 0%), fruits (1.9 vs 0.5%) and eggs (0.5 vs 0%). The provided reasons for avoiding food items are listed in table 9. Personal dislike associated with nausea and vomiting during pregnancy was the most common reason that forbade women from consuming certain food items (25.1%). People telling them that the food may cause fetal abnormality or fatty baby with consequent difficulty during delivery were other reasons reported by similar number of respondents (1.9%). During the post-education assessment, the sole reason for avoiding food was personal aversion (7%).

Effect of educational intervention on appropriate practice of nutrition during pregnancy

As indicated in table 10, the practice score at 6-week follow-up (M=13.13 out of 16, SE=0.09) was significantly higher than that of pre-intervention (M=12.55 out of 16,

Table 7 Reasons reported for avoiding certain food items (n=215)

Reasons	Pre-intervention n (%)	6-week assessment n (%)
Cultural reasons	0 (0.0)	0 (0.0)
Personal dislike (food aversion)	54 (25.1)	15 (7)
Fasting during pregnancy	1 (0.5)	0 (0.0)
Fear of fatty baby and difficulty during delivery	4 (1.9)	0 (0.0)
Fear of fetal abnormality	4 (1.9)	0 (0.0)
Fear of abortion	0 (0.0)	0 (0.0)

Table 8 Effect of educational intervention on appropriate practice of nutrition during pregnancy (n=215)

Time	M (SE)	Min, Max	Md (95% CI)	P value
Pre-intervention	12.55 (0.16)	7, 16	0.58 (0.29 to 0.87)	<0.0001
6-week follow-up	13.13 (0.09)	9, 15		

Max, maximum value; Min, minimum value.

SE=0.16). The average difference of score was 0.58 (95% CI: 0.29 to 0.87).

Effectiveness of the intervention on appropriate dietary practice during pregnancy by demographic variables

Factorial mixed ANOVA (table 11) was conducted to assess the impact of the educational intervention on the scores of practice across two time periods by age, gravidity, parity, gestational age, marital status, woman's and husband's educational status, occupation and number of ANC visits. There was no significant interaction between the categories of demographic characteristics listed above and change in practice.

DISCUSSION

Basically, the purpose of health education is to eliminate undesirable behaviours and replace them with appropriate and productive behaviour leading to healthy life. This study sought to answer the question of whether training given to pregnant women had an effect on bringing a positive change in their knowledge and appropriate dietary practice.

The knowledge score of pregnant women in this study significantly increased from 29.01/47 at pre-intervention to 42.73/47 in the immediate after intervention which later decreased to 40.94/47 6 weeks later. This was comparable with a similar Ethiopian study as the proportion of pregnant women with good knowledge of nutrition during pregnancy increased from 53.9% to 97%.⁵ Similar quasi-experimental Iranian study also revealed that the awareness level of pregnant women about healthy nutrition significantly increased from 3% before intervention to 31% after the nutritional education intervention.² It also agrees with a study done in India which found an overall nutritional knowledge improvement from a mean of 22 in the pre-test to 32.7 at post-test.¹⁷ These similarities show the effectiveness of NE in improving knowledge of pregnant women. In addition to that, the GATHER counselling skills incorporated in the training given to health professionals might have helped improve the communication between the professionals and their pregnant patients thereby significantly increasing the percentage of women who had an ample opportunity to discuss healthy eating at their ANC visits. The change in the level of knowledge in this study did not show any significant interaction with the sociodemographic characteristics except with gravidity, the same was true in an Iranian study where the change was independent of age or literacy levels.² This result is a sign that there was a

gap in knowledge across most categories of background characteristics. This fact makes preparing a one and only teaching module easier as the prepared module can be equally effective for pregnant women of various background characteristics.

Assessing the preferred source of information among pregnant women was necessary as it helps in devising recommendations. In this study, 70.2% of the pregnant women turned to a doctor/nurse/midwife for information. This was similar to other studies such as an Australian study where 67.4% of the NE was provided by midwives.¹⁸ In another Knowledge, Attitude and Practice Survey, the main sources of information were doctors.¹⁹ These results were unlike other studies such as a recent Ethiopian study where the result was not in favour of health professionals as the best source of information.⁵ The same was also evidenced in a Polish study where half of the pregnant women mentioned own experience as source of information.²⁰

This study documented a 64.8% of pregnant women who knew maternal undernutrition would bring fetal complications. This result was higher than East Wollega's result where 34.8% of respondents had the same idea.¹ A cross-sectional study in India found an even lower proportion of mothers (27.4%) with this knowledge. The pregnant women in this study who were living in an urban area had a better access to information and lesser wrong cultural influences. This difference in the study setting could be the reason for the discrepancy in the results. However, this result was lower than the Ethiopian study in which 82.5% of pregnant women knew about fetal complications of undernutrition.⁵ This difference could be an impact of the differences in the cultural and spiritual influences of the areas.

In this study, 90.7% of the study participants were fully aware of the effect of maternal undernutrition on fetal weight. This was similar to an Ethiopian study where a major proportion (82.8%) knew that maternal undernutrition results in LBW and stillbirth.⁵ It also agreed with the Lagos State study where the majority (66.8%) of the respondents agreed that inadequate and inappropriate nutrition can determine body weight of the baby.⁹

In this study, 60.9% of the pregnant women were familiar with the fact that pregnant women need to eat more than their non-pregnant state. This was more or less comparable with an Ethiopian study where the result was 270 (66.5%).⁵ Both these results were lower than Pakistani mothers who did believe

Table 9 Effectiveness of the intervention by demographic variables on practice (n=215)

Characteristics	Pre-intervention	6-week follow-up	Box M p value	Wilk's lambda	P value
	M (SD)	M (SD)			
Age					
15–19	13.8 (1.92)	39.8 (0.84)	0.195	0.955	0.085
20–24	12.2 (2.5)	13.2 (1.3)			
25–29	12.97 (1.99)	13.18 (1.32)			
30–34	12.06 (2.34)	13.10 (1.41)			
35–39	12.95 (2.52)	12.84 (1.58)			
40–44	12 (1)	12 (2.64)			
Gravidity					
Primigravida	12.21 (2.38)	10.02 (1.61)	0.080	0.994	0.252
Multigravida	12.72 (2.25)	13.18 (1.24)			
Parity					
Nullipara	2.17 (2.36)	13.04 (1.55)	0.039	0.974	0.136
Primipara	12.4 (2.48)	13.22 (1.16)			
Multipara	13.09 (2.06)	13.23 (1.11)			
Grand multipara	12.54 (2.3)	12.9 (1.78)			
Gestational age					
1st trimester	11.7 (1.91)	12.86 (1.43)	0.453	0.988	0.108
2nd trimester	12.68 (2.34)	13.16 (1.37)			
Marital status					
Married	12.56 (2.25)	13.08 (1.4)	0.086	0.997	0.411
Single	12.56 (2.98)	13.56 (0.96)			
Woman's educational status					
Junior and below	12.16 (2.32)	12.89 (1.48)	0.426	0.996	0.659
Secondary	12.62 (2.35)	13.21 (1.3)			
College/university level	12.86 (2.06)	13.14 (1.56)			
Husband's educational level					
Junior and below	12.15 (2.25)	12.62 (1.53)	0.026	0.990	0.759
Secondary	12.69 (2.16)	13.29 (1.25)			
College/university level	12.38 (2.55)	12.78 (1.7)			
Occupation					
Housewife	12.6 (2.23)	13.26 (1.22)	0.276	0.998	0.847
Government employee	12.59 (2.55)	12.78 (1.73)			
Private employee	13.37 (2.4)	12.85 (1.59)			
Unemployed	11.75 (2.62)	13.25 (1.5)			
Number of ANC visits					
One	12.51 (2.24)	13.11 (1.46)	0.558	0.996	0.835
Two	12.61 (2.49)	13.34 (1.15)			
Three	12.62 (2.28)	13.06 (1.41)			
Four or more	12.45 (2.35)	12.7 (1.38)			

ANC, antenatal care.

so (84%). Moreover, in another study as many as 70% of the respondents had the knowledge that they should eat differently from non-pregnant women.¹⁹ In addition to that, in a study in Shashemene district,

Ethiopia, more than three-fourths (82.4%) believed in the importance of eating balanced diet during pregnancy.¹³ This was discordant with that of University of Yaoundé's result where the majority (52%) of

Table 10 Effect of Educational intervention on appropriate practice of nutrition during pregnancy (n=215)

Time	M (SE)	Min., Max.	Md (95% CI)	P value
Pre-intervention	12.55 (0.16)	7, 16	0.58 (0.29 to 0.87)	<0.0001
6 Weeks follow-up	13.13 (0.09)	9, 15		

the study respondents thought that a mother should eat according to her appetite.³

In this study, more than half of pregnant women were knowledgeable about many food sources of iron. This was higher than the 31.8% pregnant women in an Ethiopian study with adequate knowledge on food source of iron,⁵ but it was in consonant with an Indian study where 61.3% of the pregnant women had a satisfactory knowledge on food source of iron.¹⁷ In a 2012 study by Mohannad *et al*, the overall knowledge regarding iron-rich foods was also low.¹⁹ Contrary to these comparative study's finding was reported in a Tanzanian study where 94.8% of the study population had moderate knowledge regarding sources of iron-rich foods.²¹ This study has also shown that necessity of supplementation because of inadequacy of nutrients in foods was correctly addressed by 85.6% of pregnant women. A similar study demonstrated a lower proportion of mothers (67.7%) with the same understanding regarding supplementation during pregnancy.⁵ This study also shows that only 40% of the study participants correctly answered the duration of iron supplementation though their proportion due to intervention increased to 97.7%. The same effect was seen in a study conducted on the same topic which was 35.5% prior to intervention and later increased to 92.1%.

The mean overall scores of practice of pregnant women were found to be 12.55/16 (78.44/100) and 13.13/16 (82.06/100) in the pre-intervention and 6 weeks' later assessment, respectively. This score was higher than is obtained in an Ethiopian study where the score was 6.2/11 (56.36/100).⁵ The high practice score in this study is an expected response to their higher level of knowledge. Another possible reason could be that the 6-week assessment was done post a major Christian holiday (Geez New Year) where a variety of food items are served. Regardless of the quantity of change, an interventional study also showed a significant increase in quality and quantity of the diets consumed.¹⁷ A significant increase in the amount of almost all the food groups consumed in the post-NE as compared with non-NE and pre-NE group was also evidenced in a Dutch study. An Egyptian study in 2006 also pointed that the target women increased their consumption of foods and avoided secondhand smoke.²² A high proportion of pregnant women with good practice was also seen in Pakistan (65.5%). A study in Swaziland found a closer proportion with 51% good practice among pregnant women. In contrary to these findings in a study of University of Yaoundé, more than half (58%) of pregnant women ate according to their appetites which was according to their belief.³

In this study, 69.3% of the pregnant women have added at least one additional meal from non-pregnant diet, this was in accordance with an Ethiopian's study result of 69.7%.⁵ Moreover, it was similar to an Indian study where there was a significant increase in the amount of almost all the food groups consumed in the post-NE as compared with non-NE and pre-NE group.¹⁷ This was the opposite of a study done in Wondo Genet where 75.2% of the pregnant women did not take any additional meal during pregnancy. A possible explanation for this result was involvement of women with a larger household size who had to share the food among them in the study.²³ Similarly in a study in Shashemene district, Ethiopia, only 33.2% made changes to their normal eating habit.¹³ In the same study, more than one-third (38.3%) of pregnant women practise fasting during pregnancy, in this study only one respondent reported fasting. The difference in the knowledge regarding the concepts as well as disparities in the economic level of the communities could have hugely influenced the outcome of the studies.

In a southern Ethiopian study, the habit of skipping meals was observed to a higher extent than was evidenced in this study. About 43.8% commonly skipped lunch and 24.2% reported that they skipped breakfast.²³ In this study, the most commonly skipped meal was dinner. A probable reason for this is that in the comparable study the proportion of respondents with a large family size and in their earlier gestation with associated nausea and vomiting which could have made consuming food early in the morning difficult was high.

In general, 58.1% were in line with consuming two to three servings of dairy per day, 56.7% were in line with consuming two servings of green vegetables; one serving of a yellow vegetable per day. This was a bit higher than an Ethiopian study's result where 42.4% were in line with dairy products, and 46.1% in line with green vegetable servings,⁵ but similar to a study in the USA where 42.7% and 58.9% of respondents had a habit of daily drinking of milk and eating fresh vegetables, respectively. In an Indian study, most (90%) reported consuming green leafy vegetables and fruits only once or twice a week due to economic constraints.¹⁷ In addition to that, more than three-fourths (76.5%) of study participants reported to consume cereal-based crops and about three-fourths (74.5%) reported consuming legumes in the preceding 24 hours in a study at Wondo Genet district.²³ It is obvious that diet of different communities is not the same and so one cannot expect pregnant women to consume similar items in similar proportion.

The proportion of women who correctly started to practise serving meals, which is serving alone slightly increased from 18.1% in the pre-intervention time to 22.3% post-education.

Table 11 Effectiveness of the intervention by demographic variables on practice (n=215).

Characteristics	Pre-intervention	6 weeks Follow-up	Box Mp-value	Wilk's Lambda	p-value
	M (SD)	M (SD)			
Age					
15–19	13.8 (1.92)	39.8 (0.84)			
20–24	12.2 (2.5)	13.2 (1.3)			
25–29	12.97 (1.99)	13.18 (1.32)			
30–34	12.06 (2.34)	13.10 (1.41)			
35–39	12.95 (2.52)	12.84 (1.58)			
40–44	12 (1)	12 (2.64)	0.195	0.955	0.085
Gravidity					
Primigravida	12.21 (2.38)	10.02 (1.61)			
Multigravida	12.72 (2.25)	13.18 (1.24)	0.080	0.994	0.252
Parity					
Nulli para	2.17 (2.36)	13.04 (1.55)			
Primi para	12.4 (2.48)	13.22 (1.16)			
Multipara	13.09 (2.06)	13.23 (1.11)			
Grand multi para	12.54 (2.3)	12.9 (1.78)	0.039	0.974	0.136
Gestational age					
first trimester	11.7 (1.91)	12.86 (1.43)			
second trimester	12.68 (2.34)	13.16 (1.37)	0.453	0.988	0.108
Marital Status					
Married	12.56 (2.25)	13.08 (1.4)			
Single	12.56 (2.98)	13.56 (0.96)	0.086	0.997	0.411
Woman's educational status					
Junior and below	12.16 (2.32)	12.89 (1.48)			
Secondary	12.62 (2.35)	13.21 (1.3)			
College/University level	12.86 (2.06)	13.14 (1.56)	0.426	0.996	0.659
Husband's educational level					
Junior and below	12.15 (2.25)	12.62 (1.53)			
Secondary	12.69 (2.16)	13.29 (1.25)			
College/University level	12.38 (2.55)	12.78 (1.7)	0.026	0.990	0.759
Occupation					
Housewife	12.6 (2.23)	13.26 (1.22)			
Government employee	12.59 (2.55)	12.78 (1.73)			
Private employee	13.37 (2.4)	12.85 (1.59)			
Unemployed	11.75 (2.62)	13.25 (1.5)	0.276	0.998	0.847
Number of ANC visit					
One	12.51 (2.24)	13.11 (1.46)			
Two	12.61 (2.49)	13.34 (1.15)			
Three	12.62 (2.28)	13.06 (1.41)			
Four or more	12.45 (2.35)	12.7 (1.38)	0.558	0.996	0.835

This lack of big difference may be due to the fact that nutrition knowledge alone may not be sufficient to initiate behavioural application of healthy diets. More importantly, the highly socialised culture of the country where you get to be served with all your family members cannot be just undone.

The adherence to iron supplements before the intervention in this study was 86.5%. This in comparison was higher than Zelalem *et al's* (2017) result which was 69%, a study in North Western Zone of Tigray (37.2%), America (63.7%), Italy (45.3%), India (62%) and Pakistan (56%). It is true that

the adherence of pregnant women towards iron supplements decreased after intervention. A probable reason for this is that the pregnant women coming for their first ANC visit, though had not started taking the iron supplement, were considered as having the correct practice. When they were started on the supplements, the probability of them to not adhere to the supplements started to appear for various reasons. The most commonly reported reason for not using iron supplements in the above studies was their side effects and perception that supplements have no benefits. In this study, the commonly reported reasons were gastrointestinal side effects, forgetfulness and poor access to the supplement. Other reasons not reported in this study, which is of course reassuring, include unappealing taste, fear of difficult delivery and surprisingly in an Indian study respondents believed that supplements cause miscarriage and may cause their children to have a dark complexion; and because dark complexions are considered undesirable, some women discontinue the use of the supplement. The intervention strategy, free supplementation and health providers with adequate knowledge regarding the supplements being the primary source of information could be the cause for higher percentage of pregnant women with correct practice.

Fifty-eight participants have avoided one or more food types in their current pregnancy in this study but after intervention only 15 had the same practice. In an Ethiopian study, 27.3% were avoiding certain food types and this decreased to 16.5% after intervention.⁵ A study in Shashamane found that half (49.8%) of the pregnant women in the area were avoiding one or more foods.¹³ About 20.9% of the pregnant mothers in Wondo Genet also restricted their food intake. This was also noted among 16% of Nigerian pregnant women. The disagreement in the results clearly indicates that feeding practices differ from culture to culture and society to society. Not only that, but food habits are also mainly determined by the availability of indigenous food supply, sociocultural and educational orientation of food processing and preparation methods, and the difference of these characteristics in the study participants could have had a hand in bringing difference in the results.

In this study, personal dislike associated with nausea and vomiting during pregnancy was the most common reason that forbade women from consuming certain food items. People telling them that the food may cause fetal abnormality or fatty baby with consequent difficulty during delivery was reported by similar number of respondents (1.9%). Higher proportion (9.9%) restricted their food intake in Akaki city in Ethiopia for the latter-mentioned reason.⁵ Cultural values and food taboos due to health, cultural or spiritual reasons exempted mothers from eating meat in a University of Yaoundé's study.³ The same reason was also reported in a Shashamane study.¹³ A lower proportion in this area as compared with the other studies could be due to difference in beliefs and educational level of women.

From the above, it would appear that pregnancy is an influential 'teachable moment' to promote healthy nutrition. It is true that some results of this study did not align with other comparable studies' results and the researchers to their best

have tried to explain these discrepancies by highlighting the differences in the culture, beliefs and background characteristics of the study respondents. Differences in gravity of food cravings and aversions were possibly in response to beliefs about what should be consumed alongside physiological changes in pregnancy; thus, requiring dietary counselling and support to be started early in pregnancy.

It is also evident that all nutritional advice is not followed. This may be due to lack of interest in making a change in one's diet, or certain perceived or encountered barriers that may prevent people from eating healthier diets such as the lack of money (cost), lack of time (too busy with work) or taste. Further research may then be required to address these issues.

However, even these findings are grounded on a relatively weak evidence base that is characterised by studies with design or analysis limitation. Additional well-designed research is needed to quantify the capacity for and cost-effectiveness of NE provided during pregnancy that targets improved nutrition of the pregnant mother to improve maternal, neonatal and child health outcomes and inform the development of best practices. Those better researches could also determine the additional benefit and cost-effectiveness of adding nutritional support, for example, food or micronutrient supplements.

The following limitations need to be considered while interpreting the findings of the study. The possible effect of other sources like TV, books, magazines and radio broadcasting on the change in the knowledge and practice of pregnant women towards nutrition could not be controlled. Face-to-face interview may lead to social desirability bias which may in turn bring higher proportion of correct practice among pregnant women on the follow-up questioning (as the practice is self-reported). Having said that, there could have been better ways of confirming whether pregnant women were using iodised salt or not such as doing a dye test. The self-reporting mechanism of responding also led to recall bias which could have led to information bias.

CONCLUSION

This study has shown that the current intervention generally was effective in accomplishing improved knowledge and practice level of pregnant women. The simple NE messages given to pregnant women using holistic approach of targeting all the major determinants in a sustained manner played a huge role in increasing their knowledge regarding nutrition during pregnancy. Knowledge regarding duration of iron supplementation was very low in this study. At the same time, minor knowledge gap was seen in the sources of main food groups among pregnant women. The provided NE also helped the pregnant women to improve dietary intake during pregnancy, although their adherence to iron supplements was decreased. Skipping meals and avoiding certain food items were also evident in this study. A reassuring concept is that food taboos and cultural factors were never the reasons that prevented women from consuming the food items. The educational intervention has shown more positive

impact on increasing the scores regarding knowledge of appropriate nutrition during pregnancy for primigravida mothers than for multigravida mothers, while the improvement in the dietary practice had no interaction with their sociodemographic characteristics. To sum up, attenuation of maternal and infant malnutrition may not be remote if pregnant women are well educated and counselled about nutrition during pregnancy.

Author affiliations

¹Nursing, Orota School of Medicine and Dentistry, Asmara, Eritrea

²Department of Midwifery, School of Nursing, Asmara College of Health Sciences, Ministry of Health, Asmara, Eritrea

³Asmara, Eritrea

Acknowledgements The authors would like to thank the participants who took part in this study, the National Board of Higher Education (NBHE) for funding the research and for all who contributed one way or another to the successful completion of the project.

Contributors LGT designed the study, coordinated recruitment of participants and education of participants, prepared teaching materials, and wrote all drafts and the final manuscript. SAB designed the study, coordinated recruitment of participants and education of participants, and participated in writing the manuscript. HGA coordinated recruitment of participants and education of participants, and wrote all drafts and the final manuscript. GG assured quality of data collection, and wrote all drafts and the final manuscript. ZT coordinated recruitment of participants, designed the study, modified the questionnaire, coordinated education of participants, and wrote all drafts and the final manuscript. EH assured quality of data collection, led data analysis, wrote the manuscript, and wrote all drafts and the final manuscript. All authors read and approved the final manuscript.

Funding This research was supported by the National Board of Higher Education. The award grant number is 25/08/18.

Disclaimer The funders had no role in study design, data collection and analysis, decision to publish or preparation of the manuscript.

Competing interests None declared.

Patient consent for publication Not required.

Ethics approval Ethical clearance and support letter for the study were obtained from the ethical and scientific committee of Asmara College of Health Sciences, then the researchers visited the head of the branch of MOH of Zoba Maekel for further permission. Moreover, the head nurses and medical directors of each study site were approached with full explanation of the general purpose and nature of the study. Informed written and signed consent was taken from the participants after the purpose of the study was thoroughly explained to them beforehand. Above all, the participants' information was handled with great confidentiality. Pregnant women were also informed that their participation was voluntary and that they could withdraw from the study at any time during the research.

Provenance and peer review Not commissioned; externally peer reviewed by Dr Emmanuel Baah, University of North Carolina System.

Data availability statement Data are available upon reasonable request.

Supplemental material This content has been supplied by the author(s). It has not been vetted by BMJ Publishing Group Limited (BMJ) and may not have been peer-reviewed. Any opinions or recommendations discussed are solely those of the author(s) and are not endorsed by BMJ. BMJ disclaims all liability and responsibility arising from any reliance placed on the content. Where the content includes any translated material, BMJ does not warrant the accuracy and reliability of the translations (including but not limited to local regulations, clinical guidelines, terminology, drug names and drug dosages), and is not responsible for any error and/or omissions arising from translation and adaptation or otherwise.

Open access This is an open access article distributed in accordance with the Creative Commons Attribution Non Commercial (CC BY-NC 4.0) license, which permits others to distribute, remix, adapt, build upon this work non-commercially,

and license their derivative works on different terms, provided the original work is properly cited, appropriate credit is given, any changes made indicated, and the use is non-commercial. See: <http://creativecommons.org/licenses/by-nc/4.0/>.

ORCID iD

Lidia Ghirmal Teweldemedhin <http://orcid.org/0000-0003-4707-9046>

REFERENCES

- Daba G, Beyene F, Fekadu H. Assessment of knowledge of pregnant mothers on maternal nutrition and associated factors in Guto Gida Woreda, East Wollega zone, Ethiopia. *Journal of Nutrition & Food Sciences* 2013;3:1.
- Fallah F, Pourabbas A, Delpisheh A, *et al*. Effects of nutrition education on levels of nutritional awareness of pregnant women in Western Iran. *Int J Endocrinol Metab* 2013;11:175.
- Mugyia ASN, Tanya ANK, Njotang PN. Knowledge and attitudes of pregnant mothers towards maternal dietary practices during pregnancy at the Etoug-Ebe Baptist Hospital Yaounde. *Health Sciences And Diseases* 2016;17.
- Malta MB, Carvalhaes MAdeBL, Takito MY, *et al*. Educational intervention regarding diet and physical activity for pregnant women: changes in knowledge and practices among health professionals. *BMC Pregnancy Childbirth* 2016;16:175.
- Zelalem A, Endeshaw M, Ayenew M, *et al*. Effect of nutrition education on pregnancy specific nutrition knowledge and healthy dietary practice among pregnant women in Addis Ababa. *Clinics in Mother and Child Health* 2017;14:265.
- Islam MN, Ullah M. Knowledge and attitude of urban pregnant women of Bangladesh toward nutrition, health care practice and delivery place. *J Med Sci* 2005;5:116–9.
- McDonald SD, Pullenayegum E, Taylor VH, *et al*. Despite 2009 guidelines, few women report being counseled correctly about weight gain during pregnancy. *Am J Obstet Gynecol* 2011;205:333.e1–333.e6.
- Mirsanijari M, Muda W, Ahmad A. Does nutritional knowledge have relationship with healthy dietary attitude and practices during pregnancy. *ICNFS* 2012;39:159–63.
- Okunaiya G, Fadupin G, Knowledge Oladeji D. Attitude and practice of maternal and child food-based dietary guidelines among pregnant women in urban slum of Lagos state. *Clinics Mother Child Health* 2016;13:2.
- Rizvi F. Impact of maternal education, and socioeconomic status on maternal nutritional knowledge and practices regarding iron rich foods and iron supplements. *Ann Pak Inst Med Sci* 2012;8:101–5.
- Thangaratinam S, Rogozinska E, Jolly K, *et al*. Effects of interventions in pregnancy on maternal weight and obstetric outcomes: meta-analysis of randomised evidence. *BMJ* 2012;344:e2088.
- Eritrean demographic health survey 2002.
- Biza Zepro N. Food Taboos and misconceptions among pregnant women of Shashemene district, Ethiopia, 2012. *SJPH* 2015;3:410–6.
- Eritrean population health survey 2002.
- Eritrean population health survey 2010.
- Demissie T, Muroki NM, Kogi-Makau W. Food aversions and cravings during pregnancy: prevalence and significance for maternal nutrition in Ethiopia. *Food Nutr Bull* 1998;19:20–6.
- Garg A, Kashyap S. Effect of counseling on nutritional status during pregnancy. *Indian J Pediatr* 2006;73:687–92.
- Arrish J, Yeatman H, Williamson M. Self-Reported nutrition education received by Australian midwives before and after registration. *J Pregnancy* 2017;2017:1–9.
- Mohannad A, Rizvi F, Irfan G. Impact of maternal education, and socioeconomic status on maternal nutritional knowledge and practices regarding iron rich foods and iron supplements. *Ann Pak Inst Med Sci* 2012;8:101–5.
- Sakhile KS. The nutritional knowledge of pregnant women. *Pol J Public Health* 2014;124:191–4.
- Nyagawa DR. The effect of health and nutrition training among health workers on Anaemina in rural areas of Tanzania: a study in Iramba and Kondoa district 2001.
- Ahrari M, Houser RF, Yassin S, *et al*. A positive deviance-based antenatal nutrition project improves birth-weight in upper Egypt. *J Health Popul Nutr* 2006;24:498.
- Kuche D, Singh P, Moges D. Dietary practices and associated factors among pregnant women in WONDO GENET district, southern Ethiopia: a cross-sectional study. *J. Pharm. Sci. Innov.* 2015;4:270–5.

Table 1: Geographical location of the health facilities

Northern West Asmara	Northern East Asmara
Hazhaz Health Station	Lasale Health Station
Mai Temenai Health Station	Geza Banda Health Center
Dirfo Health Station	
Semenawi Asmara Health Center	
Southern West Asmara	Southern East Asmara
Godaif Community Hospital	Akria Health Center
Godaif Health Station	Edaga Hamus Community Hospital
Felegehiwet Health Station	Geza Kenisha Health Station
Freselam Health Station	Arbaete Asmara Health Station
Denden Health Station	
Sembel Health Station	
Bet Mekae Community Hospital	

Table 2: Sample allocation of pregnant women in the health facilities.

Name of health facility	ANC clients seen in August 2017	Sample size
Edaga Hamus Community Hospital	140	65
Bet Mekae Community Hospital	59	27
Godaif Health Station	96	44
Geza Banda Health Center	73	33
Semenawi Asmara Health Center	113	51
Total	481	220

Research protocol

1. Project title:

Effect of nutrition education on pregnancy specific nutrition knowledge and practice among pregnant women in Asmara, Eritrea in the year 2018, a quasi-experimental study

2. Project summary:

Nutrition is a central and fundamental pillar of human life that is required for health and development throughout the entire life span in general and during pregnancy in particular. A pregnancy diet which is sufficient in energy, with a variety of nutrients, minerals, and vitamins, and the mother's avoidance of toxins and contaminants is important to ensure health for the mother and the growing fetus. In addition to that, poor quality diet during pregnancy has been found to be associated with unhealthy maternal weight gain, preterm birth, anemia and low birth weight babies which grow and develop less well and have poorer chance of survival than normal birth weight babies. The World Health Organization (WHO) recognized the impact of nutrition in pregnancy and recommends that Antenatal Care providers should provide adequate, specific and acceptable nutrition related advice to their clients during every visit of antepartum. The antenatal period appears to be the ideal time and setting to institute the intervention which could motivate mothers to make changes that could maximize their outcome and that of the baby because it is the period with opportunities for regular contact with health professionals. Protein energy under nutrition and micronutrient deficiency has been associated with infant and maternal mortality and Eritrea is no different from the many countries suffering from infant and maternal mortality. Eritrean Demographic Health Survey (EDHS) of 2002 came up with 2% of women who are shorter than 145cm, the cutoff point below which a woman is said to be at risk of giving birth to a low birth weight baby. It also indicates that 37% of women aged 15-49 have a low body mass index indicating chronic energy deficiency. Despite that fact, it is not uncommon to observe women to eat less during pregnancy to avoid fatty baby and so to prevent difficult delivery. A section from Eritrean Population Health Survey (EPHS) 2002 also showed that only 4 in 10 mothers received iron tablets but almost all took the tablets for less than 60 days despite a 55% prevalence of anemia among pregnant women although the 2010 EPHS showed a 57.3% rate of iron consumption among pregnant women with in their last birth. Such observation was also witnessed in several other

countries where men are given more food than women due to a belief that men need more food because they work harder. Moreover it is true that misconceptions and food taboos governing pregnancy still exist. This was due to the belief that certain food items will be plastered on the fetal head, fear of abortion, fatty baby and still birth. Thus planned interventions can result in the attainment of satisfactory knowledge and practice regarding nutrition during pregnancy ultimately resulting in adequate maternal diet, optimal maternal weight gain and positive infant outcomes such as satisfactory birth weight. This is a quasi-experimental study that aims to assess the effect of nutrition education on the appropriate nutritional knowledge and practice of pregnant women. It also seeks to identify the change in pregnancy-specific dietary knowledge and practice of pregnant women across the categories of demographic variables after the educational intervention. This study involves single group whose knowledge and practice level will be assessed prior to and after educational intervention by a predesigned questionnaire. Data will then be analyzed according to the statistical plan.

3. Project description:

Rationale

Every two minutes around the world there is a maternal death and one woman dies every seven minutes from PPH, the single most common cause of maternal mortality (Mirsanjari et al., 2012). This proves right the need to synthesize evidence about the effects of interventions to prevent maternal deaths and reduce maternal morbidities. Health education and counseling instituted correctly is the core of all preventive and control measures. There are strong evidences that show nutrition counseling during pregnancy has significant impact on dietary habit of pregnant women, maternal and birth outcome of pregnancy. But these facts have not been proven to be true in our country especially in the study area.

Pregnant women are one of the vulnerable populations to develop iron deficiency anemia. Severe Anemia (Hb<7.0 g/dl) which worsens with pregnancy in a study sample was found to be 6.4% after which when an intervention was implemented, no subject was found to be severely anemic (Garg & Kashyap, 2006). This gives a picture that the role of nutrition counseling at ANC visit is indisputably crucial to stop the intergenerational cycle of malnutrition.

This study intends to provide insight on the effect of nutrition counseling on knowledge and practice of pregnant women. This study is also important in filling the gap in knowledge of dietary practice among ANC providers and pregnant women. It will serve as a baseline for studies and programs working on interventions to improve national and global nutrition status of pregnant women. The intervention of this study, training and nutrition education at the ANC, materials used can also be duplicated to cover the gap of nutrition education in the area and the country as a whole.

Objectives

To assess the effect of nutrition education on the appropriate nutritional knowledge and practice of pregnant women in health facilities providing antenatal care in Asmara.

Methodology

Research design: Facility based single group pre-post quasi experimental study design will be employed.

Research subjects or participants: Pregnant women who are on their first and second trimester of pregnancy and willing to participate will be included in the study. However, pregnant women who are sick at the time of the study and those who cannot communicate verbally will be excluded from the study.

Sample size: Sample size of pregnant women will be calculated using a G-power Version 3 calculator using a test family of t-test. Difference between two dependent means (matched pairs) technique will be used with an effect size of 0.2, which is ideal for this study, with actual power and level of significance of 0.80 and 0.05 respectively. The sample size calculated is 199. Considering 10% dropout from follow-up, a final sample of 220 is determined. This number will then be proportionally allocated to the health facilities.

Nutrition education counseling: The nutrition education contains introductory messages and focuses on meanings of healthy diet, eating a variety of food, sources of the main food groups and micronutrients, eating well with the locally available food, hazards of maternal malnutrition, important supplements to be taken during pregnancy, harmful substances to be avoided, gestational weight gain and measures of alleviating common discomforts associated with nutrition during

pregnancy. The training program will be carried out in the form of counseling using printed materials and flip charts for pictorial representation. Self-reading of leaflets containing the core messages for every topic prepared in the native language of the participants will also be employed as the women in the study had one each.

Data management and analysis: Data quality will be warranted through trained data supervisors. Close supervision and daily information exchange will be done by the principal investigator in person or by telephone as a means to correct any problems in the course of the data collection. Data uniformity and completeness will be checked throughout the data collection period and will be cleaned.

The cleaned data will be coded and entered in to SPSS version 22.0. Normality of the entered data will be checked with Kolmogorov-Smirnov test and Fisher's measures of skewness and kurtosis. Descriptive analysis of the socio-demographic and other covariates will be done using frequencies (percentages), mean (SD) and median (IQR) as appropriate. In order to make comparison of the overall practice scores at two time points, paired t-test will be used. Comparison of knowledge scores at three time points will be performed using repeated measures ANOVA followed by Bonferroni post-hoc test. Mixed between within effect model will be used to determine effectiveness of health education on nutrition knowledge and practice during pregnancy through categories of socio-demographic variables. Finally the results will be presented using tables and graphs. A statistical significance will be considered at p -value of less than 0.05 except for the Box M p -value of less than 0.001.

Ethical consideration: Ethical clearance and support letter for the study will be obtained from the ethical and scientific committee of ACHS then the researcher will visit the head of the branch of MOH of Zoba Maekel for further permission. Moreover the head nurses and medical directors of each study site will be approached with full explanation of the general purpose and nature of the study. Informed written and signed consent will be taken from the participants after the purpose of the study is thoroughly explained to them beforehand. Above all, the participants' information will be handled with great confidentiality. Pregnant women will also be informed that their participation is voluntary and that they could withdraw from the study at any time during the research. Ethical supporting letter obtained from Asmara College of Health Sciences is annexed.

ANNEX



ኮሌጅ ሳምራት ጥዕና ሳምራት

كلية أسمره للعلوم الصحية

ASMARA COLLEGE OF HEALTH SCIENCES

Research Ethical Clearance Committee
Documentation of Review and Ethical Approval of Research Project

Project Title: EFFECT OF PREGNANCY SPECIFIC NUTRITIONAL EDUCATION BY HEALTH PROFESSIONALS ON KNOWLEDGE AND PRACTICE OF PREGNANT WOMEN IN HEALTH FACILITIES PROVIDING ANC IN THE YEAR 2018

School/Department: SCHOOL OF NURSING, DEPARTMENT OF MIDWIFERY

Investigator(s): LIRIA GUHEMAL, B.Sc.MSc. Candidate

As the signature below testifies, the principal investigator obliged to conform to the following:
In case my investigation pertains to human subjects, I acknowledge protecting the rights and welfare of the participants involved. I also acknowledge my responsibility as an investigator to secure the informed consent of the participants by explaining the procedure, as far as possible, and by describing the risk as weighed against the potential benefits of the investigation. I assure the committee that all procedures performed under the project will be conducted in accordance with those federal regulations and College policies which govern research involving human subjects.
Any deviation from the project (e.g. change in the principal investigator, research methodology, subject recruitments procedure etc.) will be submitted to the committee in the form of a change of protocol for its approval prior to implementation. P.I. agrees to report all protocol deviations or adverse events immediately to the Research Ethical committee. In case of research involves animals, the investigator(s) has to report the type of animals, number of animals required, N^o of animals to be sacrificed and whether the research work require sacrifice of animals or blood samples are needed from the research animals. The investigator is also supposed to ensure that he/she will adopt the standard procedure for the research to be conducted.

Principal Investigator(s): LIRIA GUHEMAL Name [Signature] Signature 21/05/2018 Date

Faculty advisor: PROF. ZEMENEFES TSIOG Name [Signature] Signature 29/05/2018 Date

(For Committee Use)

The proposal with the aforementioned title has been reviewed by ACHS-RECC and gave the following decision.

REVIEW STATUS:
Exempted Approved Not Approved

Members, ACHS-RECC:

1. Name: <u>Oliver B Achils</u>	Signature: <u>[Signature]</u>	Date: <u>5/6/2018</u>
2. Name: <u>S. ANNALASHIMAY</u>	Signature: <u>[Signature]</u>	Date: <u>8/6/2018</u>
3. Name: <u>Prof. Indemnet Singh Asand</u>	Signature: <u>[Signature]</u>	Date: <u>5/6/2018</u>

Chair, ACHS-RECC
Name: Abumjer Fessalaye Signature: [Signature] Date: 8/6/2018

Mailing Address: Asmara College of Health Sciences, P.O.Box 8566, Asmara - Eritrea. Fax 291-1-160534. Asmara College of Health Sciences, Ass-Dean of B & PG Studies, 291-1-162132

References:

1. Daba G, Beyene F, Fekadu H, Garoma W: Assessment of knowledge of pregnant mothers on maternal nutrition and associated factors in Guto Gida Woreda, East Wollega Zone, Ethiopia. *Journal of Nutrition & Food Sciences* 2013, 3(6):1.
2. Fallah F, Pourabbas A, Delpisheh A, Veisani Y, Shadnoush M: Effects of nutrition education on levels of nutritional awareness of pregnant women in Western Iran. *International journal of endocrinology and metabolism* 2013, 11(3):175.
3. Mugyia ASN, Tanya ANK, Njotang PN, Ndombo PK: Knowledge and Attitudes of Pregnant Mothers towards Maternal Dietary Practices During Pregnancy at the Etoug-Ebe Baptist Hospital Yaounde. *HEALTH SCIENCES AND DISEASES* 2016, 17(2).
4. Malta MB, Carvalhaes MAdBL, Takito MY, Tonete VLP, Barros AJ, de Lima Parada CMG, Benício MHDA: Educational intervention regarding diet and physical activity for pregnant women: changes in knowledge and practices among health professionals. *BMC pregnancy and childbirth* 2016, 16(1):175.
5. Zelalem A, Endeshaw M, Ayenew M, Shiferaw S, Yirgu R: Effect of nutrition education on pregnancy specific nutrition knowledge and healthy dietary practice among pregnant women in Addis Ababa. *Clinics in Mother and Child Health* 2017, 14(3):265.
6. Islam MN, Ullah M: Knowledge and attitude of urban pregnant women of bangladesh toward nutrition, health care practice and delivery place. *J Med Sci* 2005, 5(2):116-119.
7. McDonald SD, Pullenayegum E, Taylor VH, Lutsiv O, Bracken K, Good C, Hutton E, Sword W: Despite 2009 guidelines, few women report being counseled correctly about weight gain during pregnancy. *American journal of obstetrics and gynecology* 2011, 205(4):333. e331-333. e336.
8. Mirsanjari M, Muda W, Ahmad A, Othman MS, Mosavat M: Does nutritional knowledge have relationship with healthy dietary attitude and practices during pregnancy. *ICNFS* 2012, 39:159-163.
9. Okunaiya G, Fadupin G, Oladeji D: Knowledge, Attitude and Practice of Maternal and Child Food-Based Dietary Guidelines among Pregnant Women in Urban Slum of Lagos State. *Clinics Mother Child Health* 2016, 13(240):2.

10. Rizvi F: Impact of maternal education, and socioeconomic status on maternal nutritional knowledge and practices regarding iron rich foods and iron supplements. *Ann Pak Inst Med Sci* 2012, 8(2):101-105.
11. Thangaratinam S, Rogozińska E, Jolly K, Glinkowski S, Roseboom T, Tomlinson J, Kunz R, Mol B, Coomarasamy A, Khan K: Effects of interventions in pregnancy on maternal weight and obstetric outcomes: meta-analysis of randomised evidence. *Bmj* 2012, 344:e2088.
12. Eritrean Demographic Health Survey. 2002.
13. Zepro NB: Food taboos and misconceptions among pregnant women of Shashemene District, Ethiopia, 2012. *Sci J Public Health* 2015, 3(3):410-416.
14. Eritrean Population Health Survey. 2002.
15. Eritrean Population Health Survey. 2010.
16. Demissie T, Muroki N, Kogi-Makau W: Food aversions and cravings during pregnancy: Prevalence and significance for maternal nutrition in Ethiopia. *Food and Nutrition Bulletin* 1998, 19(1):20-26.
17. Garg A, Kashyap S: Effect of counseling on nutritional status during pregnancy. *The Indian Journal of Pediatrics* 2006, 73(8):687-692.
18. Arrish J, Yeatman H, Williamson M: Self-Reported Nutrition Education Received by Australian Midwives before and after Registration. *Journal of pregnancy* 2017, 2017.
19. Mohannad A, Rizvi F, Irfan G: Impact of maternal education, and socioeconomic status on maternal nutritional knowledge and practices regarding iron rich foods and iron supplements *Ann Pak Inst Med Sci* 2012, 8(2):101-105.
20. K P, K J, K M: The nutritional knowledge of pregnant women. *Pol J Public Health* 2014, 124(4):191-194.
21. Nyagawa DR: The effect of health and nutrition training among health workers on Anaemina in rural areas of Tanzania: a study in Iramba and Kondoa district. 2001.
22. Ahrari M, Houser RF, Yassin S, Mogheez M, Hussaini Y, Crump P, Darmstadt GL, Marsh D, Levinson FJ: A positive deviance-based antenatal nutrition project improves birth-weight in Upper Egypt. *Journal of health, population, and nutrition* 2006, 24(4):498.

23. Kuche D, Singh P, Moges D: Dietary practices and associated factors among pregnant women in Wondo Genet District, southern Ethiopia. *J Pharm Sci Innov* 2015, 4(5):270-275.

Informed Consent Sheet for ANC clients

Consent explanation

Good day to you madam, my name is _____ and I am working as a data collector for a study whose aim is to assess the effect of nutrition education by health professionals on the knowledge and practice of appropriate nutrition during pregnancy among pregnant women. This knowledge will help us in providing proper nutritional counseling for pregnant women in the future and will help in shaping the ANC care of the facilities for the better. We would appreciate your participation in this survey very much. Should you agree to participate, I will ask you questions about basic information of you and your pregnancy, your basic knowledge of nutrition during pregnancy and your dietary practices during your current pregnancy. You will be asked this questions now, after the education and six weeks after receiving counseling by ANC provider on the subject. For the interview part, there is no right or wrong answer to each question.

Whatever information you provide will be kept strictly confidential by using codes and will not be shown to other individuals. Your contact information like phone number will be taken as a follow up for your second interview.

Your participation is voluntary, and you can choose not to participate now or at any time during our interview. However, I hope that you will actively participate in this study since the insights and data we get from you are very important.

The interview will take only about 20-30 minutes of your time. You will not have any direct incentives by participating and your decision to participate in the study will not affect the service you will get from your ANC clinic.

If you have any questions, you can contact the Principal Investigator (Lidia Ghirmai: 07447480).

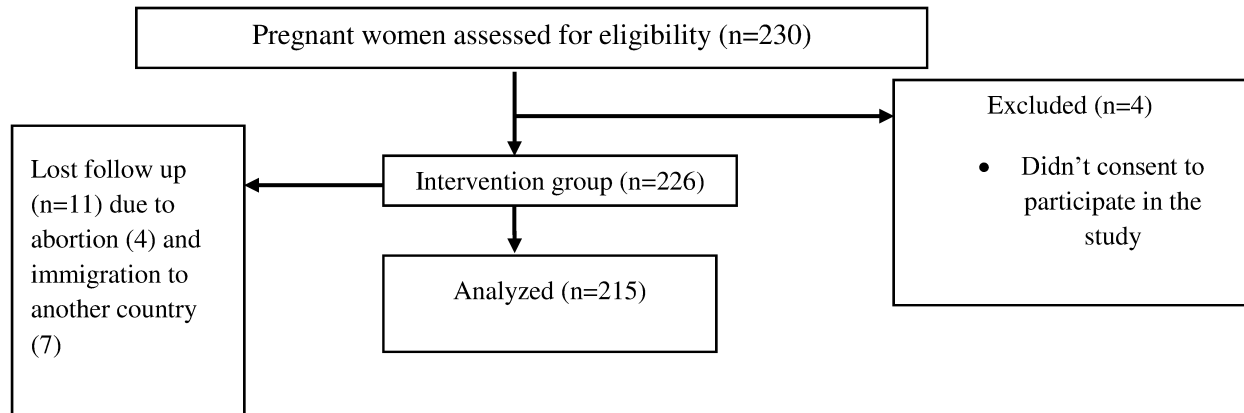
At this time, do you want to ask me anything about the survey? (If yes answer her questions politely) May I begin the interview now? (Circle) 1 = Yes 2 = No (Thank her for her time and end the interview)

Signature of participant: _____ Date: _____

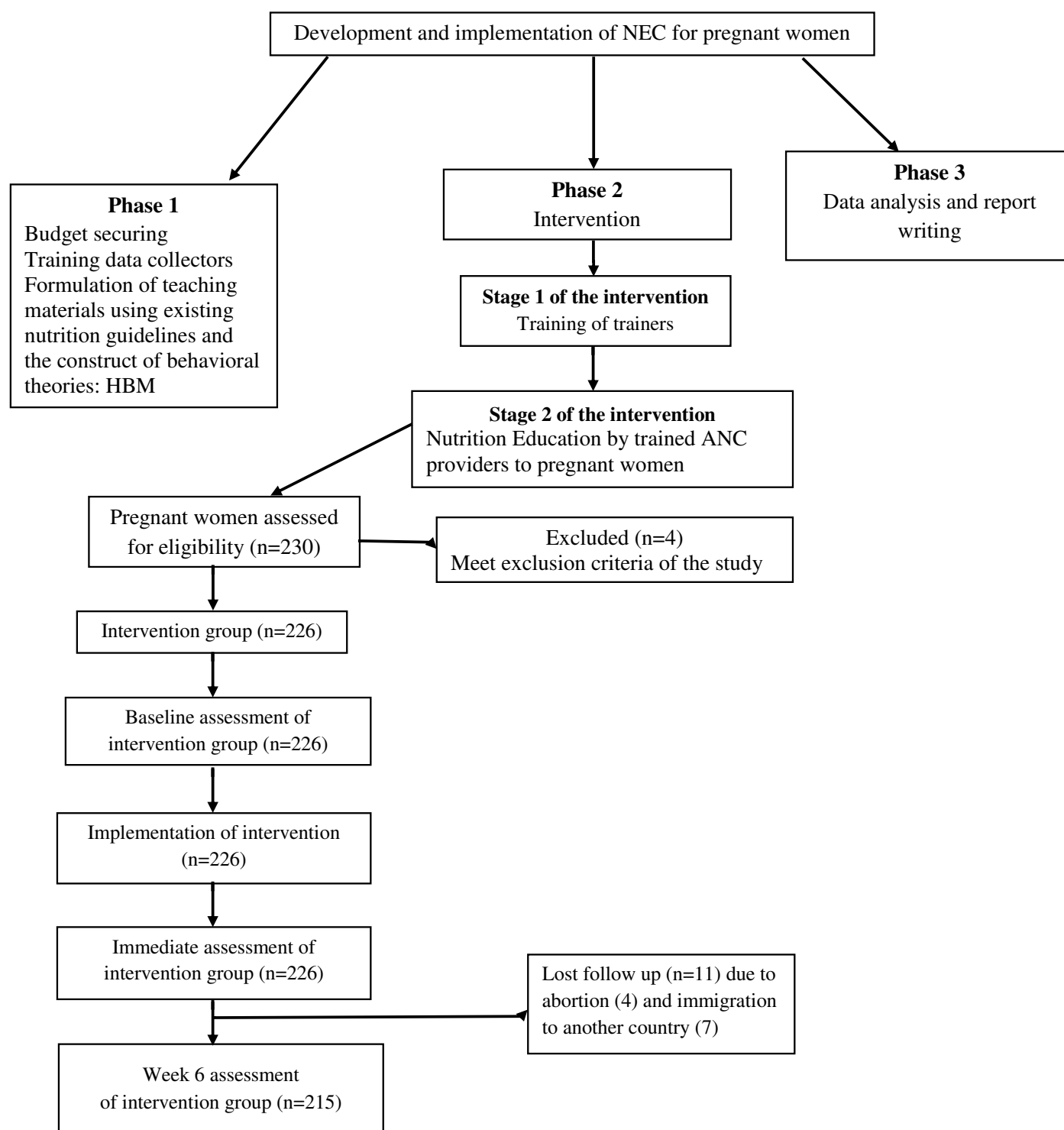
Name & Signature of interviewer: _____ Date: _____

Name & Signature of Supervisor: _____ Date: _____

Figure 1: Flow diagram showing subjects initially enrolled, intervened, followed up and included in the analyses in the quasi experimental study.



Study protocol



Key: ANC-Antenatal Care
HBM-Health Belief Model
NEC-Nutrition Education Counseling