


Impact of smoking on COVID-19 outcomes: a HOPE Registry subanalysis

Carolina Espejo-Paeres ¹, Iván J Núñez-Gil,² Vicente Estrada,² Cristina Fernández-Pérez,³ Giovanna Uribe-Heredia,⁴ Clara Cabré-Verdiell,⁵ Aitor Uribarri,⁶ Rodolfo Romero,⁷ Marcos García-Aguado,⁸ Inmaculada Fernández-Rozas,⁹ Victor Becerra-Muñoz,¹⁰ Martino Pepe,¹¹ Enrico Cerrato,¹² Sergio Raposeiras-Roubín,¹³ María Barrionuevo-Ramos,¹⁴ Freddy Aveiga-Ligua,¹⁵ Carolina Aguilar-Andrea,¹⁶ Emilio Alfonso-Rodríguez,¹⁷ Fabrizio Ugo,¹⁸ Juan Fortunato García-Prieto,¹⁹ Gisela Feltes,²⁰ Ibrahim Akin,²¹ Jia Huang,²² Jorge Jativa,²³ Antonio Fernández-Ortiz,² Carlos Macaya,² Ana Carrero-Fernández,¹⁶ Jaime Signes-Costa²⁴

To cite: Espejo-Paeres C, Núñez-Gil IJ, Estrada V, *et al.* Impact of smoking on COVID-19 outcomes: a HOPE Registry subanalysis. *BMJ Nutrition, Prevention & Health* 2021;0. doi:10.1136/bmjnph-2021-000269

▶ Additional supplemental material is published online only. To view, please visit the journal online (<http://dx.doi.org/10.1136/bmjnph-2021-000269>).

For numbered affiliations see end of article.

Correspondence to

Dr Carolina Espejo-Paeres, Cardiology, Hospital Clínico Universitario San Carlos Instituto Cardiovascular, Madrid 28040, Spain; carolina.espejo.paeres@gmail.com

CE-P and IJN-G contributed equally.

Received 3 March 2021
Accepted 23 May 2021



© Author(s) (or their employer(s)) 2021. Re-use permitted under CC BY-NC. No commercial re-use. See rights and permissions. Published by BMJ.

ABSTRACT

Background Smoking has been associated with poorer outcomes in relation to COVID-19. Smokers have higher risk of mortality and have a more severe clinical course. There is paucity of data available on this issue, and a definitive link between smoking and COVID-19 prognosis has yet to be established.

Methods We included 5224 patients with COVID-19 with an available smoking history in a multicentre international registry Health Outcome Predictive Evaluation for COVID-19 (NCT04334291). Patients were included following an in-hospital admission with a COVID-19 diagnosis. We analysed the outcomes of patients with a current or prior history of smoking compared with the non-smoking group. The primary endpoint was all-cause in-hospital death.

Results Finally, 5224 patients with COVID-19 with available smoking status were analysed. A total of 3983 (67.9%) patients were non-smokers, 934 (15.9%) were former smokers and 307 (5.2%) were active smokers. The median age was 66 years (IQR 52.0–77.0) and 58.6% were male. The most frequent comorbidities were hypertension (48.5%) and dyslipidaemia (33.0%). A relevant lung disease was present in 19.4%. In-hospital complications such sepsis (23.6%) and embolic events (4.3%) occurred more frequently in the smoker group ($p < 0.001$ for both). All cause-death was higher among smokers (active or former smokers) compared with non-smokers (27.6 vs 18.4%, $p < 0.001$). Following a multivariate analysis, current smoking was considered as an independent predictor of mortality (OR 1.77, 95% CI 1.11 to 2.82, $p = 0.017$) and a combined endpoint of severe disease (OR 1.68, 95% CI 1.16 to 2.43, $p = 0.006$).

Conclusion Smoking has a negative prognostic impact on patients hospitalised with COVID-19.

INTRODUCTION

COVID-19 was declared a pandemic on 11 March 2020 by the WHO.¹ COVID-2019 has a wide spectrum of manifestations ranging from subclinical infection to acute respiratory distress syndrome (ARDS) and multiorgan

What this paper adds

- ▶ It has been described that a history of smoking is associated with higher rates of mortality and complications in patients with COVID-19. Contrastingly, it has been suggested that tobacco may have a 'protective' role in COVID-19 infections.
- ▶ The strengths of this study are the large sample size and adjusting for confusion factors to evaluate the independent role of tobacco in the course of SARS-CoV-2 infections. We included former smokers as well in our analysis since both current and former smokers share characteristics and underlying respiratory comorbidities.
- ▶ Main limitations of this study are that some variables such as packs-year of smoking or smoke-free years were not recorded, as well as the bias given the observational nature of the study.

failure.^{2,3} Although some poor prognostic factors have been observed,^{4,5} its clinical course remains unpredictable.

Since pulmonary alveolar epithelial cells are one of the targets of SARS-CoV-2, underlying respiratory risk factors may play a role in modifying respiratory response. Available findings regarding smokers are inconsistent, and the impact of smoking on SARS-CoV-2 infection is uncertain.⁴⁻⁷

A large case series from China reported a higher prevalence of active smokers in severe COVID-19 infections, in comparison to milder cases.⁴ Nevertheless, some studies failed to demonstrate a link between smoking and poorer prognosis of the disease. Even some previous series suggested a theoretical 'protective' effect of smoking habit.^{7,8} This last hypothesis can be deduced from the lower rates of smoking observed in patients

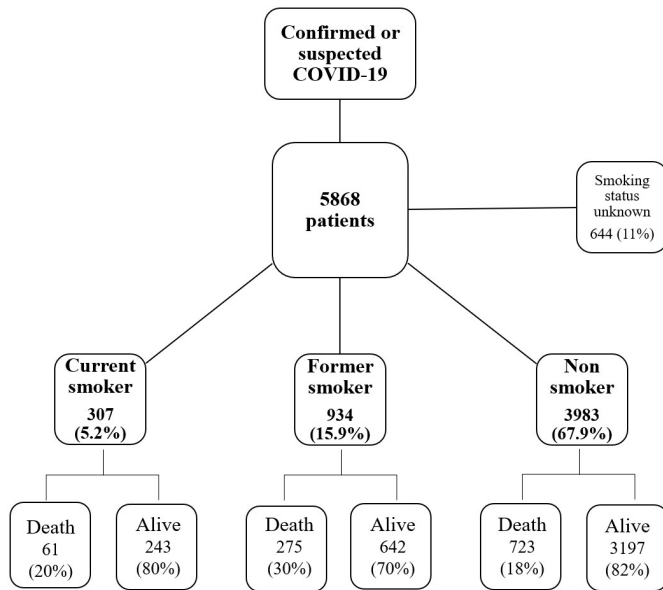


Figure 1 Study flow diagram.

with COVID-19 in comparison with the general population. The prevalence of smokers among SARS-CoV-2-infected patients has been estimated between 1.4% and 12.5% according to different studies.^{5–15} These rates are notably lower than those recorded in the Chinese general population (25.2%).¹⁶

The pathophysiology of lung damage has not been fully understood. It has been suggested that high levels of proinflammatory cytokines in serum can induce the hyperinnate inflammatory response. This cascade produces a ‘cytokine release syndrome’ with an overproduction of immune cells and cytokines, which leads to an ARDS and septic shock.^{17–20} Smoking may modulate the immune response and smokers could present an attenuated immune response presenting lower levels of inflammation markers compared with non-smokers.^{21 22}

On the one hand, the ACE2 protein is known to play a role in the infection’s mechanism. The ACE2 protein is expressed on the surface of lung type 2 pneumocytes and is the principal receptor molecule for SARS-CoV-2.^{23–25} On the other hand, some authors have described decreased levels of ACE2 in smokers.^{26 27} Conversely, it has been suggested that ACE2 is upregulated on the airway epithelium of smokers. In a study in resected lung specimens, Leung and coworkers found an increase of ACE2 gene expression in patients with chronic obstructive pulmonary disease (COPD). Likewise, a higher ACE2 gene expression was observed in smokers when compared with non-smoker individuals.^{28 29} The question of whether smokers are more prone to contract SARS-CoV-2 infection remains unresolved.

Based on the aforementioned, we aimed to assess if smokers are more likely to die or develop more severe forms of COVID-19.

METHODS

Study design and population

We conducted a cohort study of 5868 consecutive patients who were hospitalised with confirmed or highly suspected COVID-19 infection. Smoking history was available in the 5224 patients included in the final analysis (figure 1). The patients were entered in the Health Outcome Predictive Evaluation for COVID-19 Registry (NCT04334291), a multicentre international registry without conflicts of interest, designed as an ambispective cohort. In this multicentre registry, we included the data from 40 centres from seven countries. From 23 March 2020 to 5 May 2020, patients discharged from the hospital (deceased or alive) with COVID-19 diagnosis were included in the registry. Epidemiological and clinical data were obtained from electronic medical records, and the data were stored in an anonymised fashion.

Definitions and study endpoints

We assessed the impact of smoking on the prognosis of 5224 patients with COVID-19. We defined three study groups according to smoking status. Patients were classified in active smokers, former smokers and non-smokers. We evaluated the differences in baseline characteristics, clinical presentation and treatment, according to these groups. Likewise, we performed an age-stratified analysis of mortality and complications in each smoking group. Age groups were divided into quartiles as follows: (1) <52 years old, (2) 52–66 years old, (3) 66–77 years old and (4) >77 years old.

The primary endpoint was defined as all-cause in-hospital death. A combined secondary endpoint was established as a composite of intensive care unit (ICU) admission, need of prone position or death. Other secondary outcomes assessed included in-hospital complications such as ICU admission, respiratory insufficiency, pneumonia, sepsis, systemic inflammatory response syndrome (SIRS) and embolic events.

Patient and public involvement

The research question and outcome measures were informed according to experience. Due to the pandemic situation, it was not appropriate to involve patients or the public in the design of our research and recruitment to or conduct of the study. Results may be disseminated on reasonable request.

Statistical analysis

The data are presented as mean (SD) for continuous variables with a normal distribution, median (IQR) for continuous variables with a non-normal distribution and as frequency (%) for categorical variables. Student’s t-test and the Mann-Whitney U test were used to compare continuous variables with normal and non-normal distributions, when needed. The χ^2 test or Fisher’s exact test was used to compare categorical variables. Univariate analysis was performed for qualitative variables and reported as ORs with 95% CIs. Given the multiplicity of variables, only

factors with a p value of <0.01 on the mentioned univariate analysis in the smoker cohort were entered into the multivariate analysis (binary logistic regression) to define independent risk factors for the principal outcome and focusing on the smoking status (current, former or never). Mortality analysis was performed using Kaplan-Meier estimates and log-rank tests to compare factors. Two-sided p values of <0.05 were accepted as statistically significant. Likewise, in order to eliminate potential confounding factors, propensity scores for mortality and the combined endpoint were performed. Statistical analysis was performed using SPSS V. 22.0 and STATA V. 14.0.

RESULTS

A total of 5224 patients with COVID-19 were included in this analysis. The majority patients, 3983 (67.9%), were non-smokers, while 934 (15.9%) were former smokers and only 307 (5.2%) were active smokers. Smoking habits were not available in 644 patients (11%); thus, finally, 5224 patients were entered in the study (figure 1). The median age was 66 years (IQR 52.0–77.0) and 3060 (58.6%) were male. Most individuals were Caucasian (4333, 82.9%) followed by Hispanic ethnicity (710, 13.6%).

In the overall cohort, the most frequent comorbidities were hypertension (2626, 48.5%) and dyslipidaemia (1716, 33.0%). Other conditions included heart disease (of any form; 1191, 23%) and obesity (981, 22.1%). A relevant lung disease was present in 1012 patients (19.4%). The most frequent lung disease was COPD (39.4%) followed by asthma (26.9%).

Comparing smoking patterns, we found that former smokers were older and had a higher comorbidity burden compared with both active and non-smoker groups. Ex-smokers had higher rates of hypertension (64.3%), dyslipidaemia (48.6%) and obesity (30.6%), as well as a higher prevalence of lung disease (39.3%) and heart disease (38.3%) ($p<0.001$ for all). Ex-smokers presented the highest prevalence of COPD (24.6%) compared with smokers (16.3%) and non-smokers (3%) ($p<0.001$). Asthma was predominantly observed among non-smokers (5.7%). Consequently, cardiovascular medications such as ACE inhibitor/angiotensin receptor blockers, antiplatelets or inhaled beta agonist were more prevalent among former smokers. Differences in baseline characteristics and previous treatment are displayed in table 1.

Regarding clinical manifestations, current smokers presented with different symptoms complaining of anosmia, dysgeusia and sore throat to a higher degree than the two other groups. The most common symptoms were fever (73%) and cough (65.6%), whereas dyspnoea was less frequently described among smokers. It is worth noting that acute-phase reactants such as C reactive protein, lactate dehydrogenase and ferritin were less frequently elevated in the smoking group, while white cell count was higher than in non-smokers or ex-smokers. Clinical presentation and analytical results are described in online supplemental table S1.

The current smoker group received more beta interferon but less antibiotics or prophylactic anticoagulation compared with both non-smoker and ex-smoker groups ($p<0.001$) (online supplemental table S2). In line with this, in-hospital complications such as sepsis (23.6%) and embolic events (4.3%) occurred more frequently in the smoker group ($p<0.001$ for both) (online supplemental table S3).

The secondary endpoint of ICU admission was greater among the active-smoker group in comparison with the former-smoker group and the non-smoker patients ($p<0.001$), while the prone position was more frequently used among ex-smokers (online supplemental table S3).

In the univariate analysis, all-cause death was higher in smokers (20.1%) when compared with non-smokers (18.4%) ($p<0.001$), while the highest mortality was observed among the former-smoker group (30.0%) ($p<0.001$). Mortality according to age groups is shown in figure 2 and online supplemental table S4.

The impact of a smoking history was then compared with the absence of a smoking history. All-cause in-hospital mortality and the combined endpoint (ICU admission, prone, death) are depicted in online supplemental table S5.

Following this, a multivariate analysis was performed. After adjusting for confounding factors, current smokers presented a greater risk of death from all causes (OR 1.77, 95% CI 1.11 to 2.82, $p=0.017$) when compared with non-smokers. Likewise, former smokers had an increased risk of death compared with non-smokers (OR 1.32 95% CI 1.0 to 1.73 $p=0.049$), but this independent risk was not as strong as that observed in the current smokers' group.

Other independent predictors of mortality were older age, hypertension, previous heart disease and elevated LDH. Moreover, we performed a multivariate analysis for a combined endpoint of death, ICU admission or need of prone position. As well, the highest risk for the combined endpoint was observed among active smokers when compared with non-smokers (OR 1.68, 95% CI 1.16 to 2.43, $p=0.006$). There were no significant differences in the combined endpoint between former smokers and non-smokers after adjusting for comorbidities (OR 1.09, 95% CI 0.86 to 1.39, $p=0.467$). The multivariate analysis is presented in the table 2.

In online supplemental table S6 propensity scores for mortality and the combined endpoint are depicted. In propensity scores, any kind of smokers (former or current) were compared with non-smokers.

Kaplan-Meier survival curve for all-cause mortality is displayed in figure 3.

DISCUSSION

The main finding in our study was the fact that current smoking was independently associated with a twofold increased risk of mortality compared with non-smoking, after adjusting for confounding factors in a large international cohort admitted with COVID-19.

Table 1 Baseline characteristics and previous treatment

Baseline characteristics	Smoker (n=307)	Ex-smoker (n=934)	Non-smoker (n=3983)	P value
Female	95 (30.9)*	160 (17.1)	1909 (47.9)*†	<0.001
Male	212 (69.1)	774 (82.9)†‡	2074 (52.1)	
Hypertension	171 (55.9)‡	597 (64.3)†‡	1758 (44.2)	<0.001
Dyslipidaemia	100 (32.9)	450 (48.6)†‡	1166 (29.4)	<0.001
Type 1 diabetes mellitus	2 (0.7)	6 (0.6)	22 (0.6)	<0.001
Type 2 diabetes mellitus	61 (19.9)	255 (27.3)†‡	623 (15.6)	
Insulin therapy	63 (20.5)	261 (27.9)†‡	645 (16.2)	<0.001
Obesity	74 (28.1)‡	228 (30.6)‡	679 (19.8)	<0.001
Renal failure	30 (9.8)‡	100 (10.7)‡	204 (5.1)	<0.001
Lung disease	93 (30.3)‡	367 (39.3)†‡	552 (13.9)	p<0.001
Atrial fibrillation	7 (2.3)	53 (5.7)†‡	136 (3.4)	0.02
HIV	6 (2)‡	6 (0.6)	8 (0.2)	<0.001
Heart disease	82 (27)‡	355 (38.3)†‡	754 (19.1)	<0.001
Cerebrovascular disease	17 (5.6)	104 (11.4)†‡	277 (7.1)	<0.001
Connective disease	12 (4)	29 (3.2)	107 (2.7)	0.389
Liver disease	29 (9.6)‡	56 (6.1)‡	105 (2.7)	<0.001
Cancer	49 (16.2)‡	210 (22.8)†‡	431 (11)	<0.001
Immunosuppression	41 (14.4)‡	99 (11.2)‡	235 (6.3)	<0.001
Partially dependent	19 (6.2)	95 (10.2)†	366 (9.2)	0.036
Totally dependent	4 (1.3)	40 (4.3)†	164 (4.1)†	
Home oxygen therapy	11 (3.6)	68 (7.3)†‡	81 (2.0)	0.036
Aspirin	70 (23.3)‡	239 (26.2)‡	462 (11.7)	<0.001
Other antiplatelet	17 (5.7)‡	63 (7.0)‡	110 (2.8)	<0.001
Anticoagulants	28 (9.3)	143 (15.7)†‡	358 (9.1)	<0.001
ACEI/ARB	124 (41.5)‡	447 (48.4)†‡	1263 (32.0)	<0.001
Beta blockers	69 (23.0)‡	230 (25.1)‡	530 (13.4)	<0.001
Beta2 agonist	43 (14.4)‡	198 (21.8)†‡	287 (7.3)	<0.001
Glucocorticoids	28 (9.4)	180 (19.7)†‡	258 (6.5)	<0.001
Vitamin D supplement	36 (12.0)	113 (12.3)	401 (10.2)	0.119
Benzodiazepines	55 (18.5)‡	155 (16.9)‡	564 (14.3)	0.027

Values are n (%). All p values were determined by using an analysis of variance with Bonferroni method.

*P<0.05 compared to ex-smokers.

†P<0.05 compared to smoker subjects.

‡P<0.05 compared to non-smoker subjects.

ACEI, ACE inhibitor; ARB, angiotensin receptor blocker.

As well, active smokers presented a higher risk for critical illness (combined endpoint of death, prone position and ICU admission) in comparison with non-smokers (1.7-fold). Interestingly, in spite of the fact that former smokers were sicker, the risk of mortality was not as strong as the risk of current smokers after adjusting for comorbidities.

According to previous series, smoking has been associated with higher mortality and complication rates in patients with COVID-19.⁴⁻⁷ Our aim was to clarify if the detrimental effect of smoking was independently associated with poor prognosis in COVID-19 after adjusting for other factors.

SARS-CoV-2 targets pulmonary alveolar epithelial cells and can cause severe pneumonia and respiratory distress.²⁻⁵ Thus, underlying respiratory risk factors such as previous lung disease or smoking may alter the respiratory response. Some studies have shown that COPD is associated with a worse prognosis of COVID-19.^{5 15}

The pathogenesis of acute lung injury remains largely unknown. It has been suggested that high levels of proinflammatory cytokines in serum can induce the hyperinnate inflammatory response. The hyperinnate inflammatory response leads to the activation of Th1 cell-mediated immunity and accumulation of alveolar macrophages and neutrophils. This cascade produces a 'cytokine release syndrome'

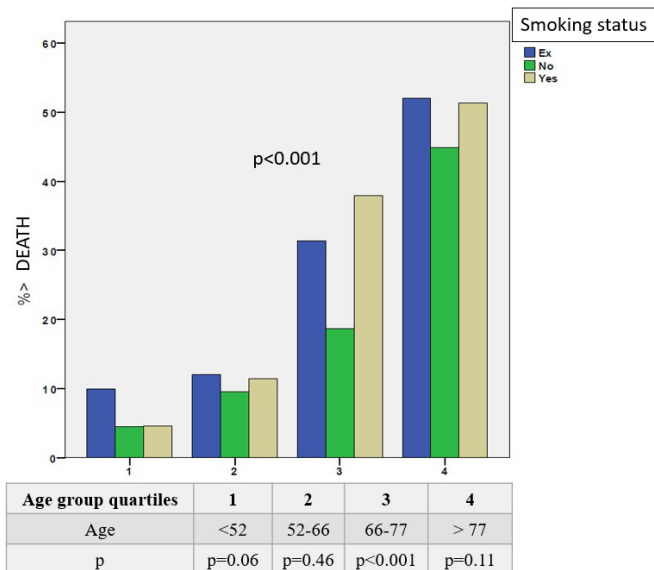


Figure 2 All-cause in-hospital death according to smoking status, stratified by age.

with an overproduction of immune cells and cytokines, which leads to an ARDS and septic shock.¹⁷⁻²⁰ Smoking may alter and attenuate immune response by lowering inflammatory marker levels.^{21 22} In line with this, smokers in our cohort presented lower levels of C reactive protein, ferritin and dehydrogenase lactate when inflammatory marker levels were compared between groups (online supplemental table S1). Likewise, SIRS was less frequently observed in the current smoker group (online supplemental table S3).

Despite these findings, globally, smoking has detrimental effects on the immune system and infectious response, and has been associated with a worse prognosis of pulmonary disease.^{17 18} Moreover, smokers were noted to have higher mortality in the previous MERS-CoV outbreak compared with non-smokers (37% vs 19%, OR=3.14, 95% CI 1.10 to 9.24, n=146).³⁰

Concerning SARS-CoV-2 infection, previous studies have suggested that active smokers and former smokers are more prone to develop severe COVID-19 infections. Despite the apparent logical link between smoking and COVID-19 prognosis, this relationship has not been fully established. In some previous studies, statistical significance was not reached; sample sizes were small; and results were not entirely adjusted for other confounding factors.⁴⁻⁷

Reviewing the available previous data, Guan *et al* described clinical characteristics and outcomes of 1099 patients with COVID-19 from China. This study reported a higher prevalence of active-smokers in severe COVID-19 (16.9%) compared with non-severe disease (11.8%). However, no statistical analysis for evaluating any association was performed.⁴

Moreover, Zhao *et al* conducted a meta-analysis with 11 case series. They studied the impact of smoking on the severity of COVID-19 among 2002 patients. This study concluded that active smoking increases the risk of severe COVID-19 (fixed effect model, OR=1.98, 95% CI 1.29 to

Table 2 Multivariate analysis for in-hospital mortality and for secondary combined endpoint

	Multivariate analysis for in-hospital mortality		
	OR	95% CI	P value
Current smoker	1.77	1.11 to 2.82	0.017
Former smoker	1.32	1.00 to 1.73	0.049
Age 52–66 years old	1.74	1.10 to 2.79	0.020
Age 66–77 years old	4.56	2.90 to 7.19	<0.001
Age >77 years old	10.63	6.78 to 16.66	<0.001
Hypertension	1.71	1.33 to 2.2	<0.001
Lung disease	1.06	0.81 to 1.39	0.679
Any cardiac disease	1.38	1.08 to 1.76	0.010
Elevated CRP	2.11	1.23 to 3.63	0.007
Elevated LDH	2.61	1.91 to 3.58	<0.001
Elevated ferritin	1.22	0.96 to 1.53	0.101

	Multivariate analysis for the composite endpoint*		
	OR	95% CI	P value
Current smoker	1.68	1.16 to 2.43	0.006
Former smoker	1.09	0.86 to 1.39	0.467
Age 52–66 years old	1.33	1.01 to 1.77	0.044
Age 66–77 years old	1.77	1.31 to 2.40	<0.001
Age >77 years old	2.64	1.95 to 3.57	<0.001
Hypertension	1.65	1.35 to 2.03	<0.001
Lung disease	1.26	1.00 to 1.58	0.054
Any cardiac disease	1.53	1.23 to 1.91	<0.001
Elevated CRP	2.27	1.50 to 3.44	<0.001
Elevated LDH	2.16	1.70 to 2.75	<0.001
Elevated ferritin	1.61	1.32 to 1.96	<0.001

Statistically significant p value: p <0.05.

*Composite endpoint of intensive care unit admission, prone position or death.

CI, Confidence interval; CRP, C reactive protein; LDH, lactate dehydrogenase.

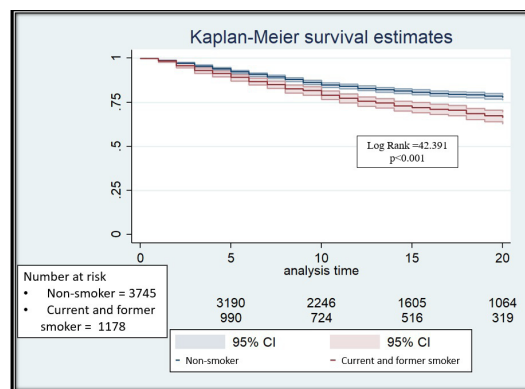


Figure 3 Kaplan-Meier survival curve free from all-cause death, according to smoking status.

3.05) by around twofold.⁵ Results were heavily influenced by one study⁴ and after removing it from analysis, association was not reached with the OR of 1.55 (95% CI 0.83 to 2.87).⁵

In a similar fashion, Liu *et al* studied 78 patients with COVID-19. They found a higher proportion of smokers (27.3%) among adverse outcome group, compared with the group that showed improvement or stabilisation (3.0%) ($p=0.018$). In their multivariate logistic regression analysis, the history of smoking was a risk factor of disease progression (OR=14.28, 95% CI 1.58 to 25.00, $p=0.018$).⁶

Furthermore, in a meta-analysis conducted by Patanavich and Glantz, a total of 11 590 patients with COVID-19 from 19 studies were included. In the overall cohort, 18.4% of the patients developed disease progression. Afterwards, results between smokers and non-smokers were compared. Smokers presented a higher rate of disease progression (29.8%) in contrast with non-smokers (17.6%) with a twofold increased risk for smokers (OR 1.91, 95% CI 1.42 to 2.59, $p=0.01$).³¹

In our cohort, pernicious effects of smoking have been observed by the finding of a relationship between smoking and worse outcomes in patients with COVID-19. Mortality was significantly higher among patients with a smoking history (both former and current) than in the non-smoker group (27.6 vs 18.4%, $p<0.001$). Likewise, a more severe disease was associated to both present and past smoking history (composite endpoint: 36.2 vs 26.1%, $p<0.001$; online supplemental table S5).

Our results are in line with those found in a meta-analysis conducted by Jiménez-Ruiz *et al*. This study analysed data from 34 studies including a total of 6487 patients with SARS-CoV-2 infections. This meta-analysis showed a worse clinical course in current and former smokers (OR 1.96, 95% CI 1.36 to 2.83), as well as a greater risk of critical illness (OR 1.79, 95% CI 1.19 to 2.70), when compared with non-smokers.³²

Moreover, Lowe *et al* evaluated the association between cumulative smoking exposure, as measured by pack-years, with COVID-19 outcomes. They studied a cohort of 7102 patients recovered in Cleveland Clinic who tested positive for COVID-19. Eighty-five per cent (6020) of them were non-smokers; 2.4% (172) were current smokers; and 12.8% (910) were former smokers. As well, they compared non-smokers with patients smoking 0–10, 10–30 and more than 30 pack-years, respectively. They found an association between the risk of bad outcomes and the number of pack-years, with a 1.89 and 2.25-fold increased risk of mortality and hospitalisation, respectively, among those patients smoking more than 30 pack-years. This relationship was dose-dependent with a progressive increment of risk according to the number of pack-years. They conclude that smoking is an independent risk factor for hospital admission and mortality in COVID-19.³³

Likewise, a meta-analysis conducted by Vardavas reviewed five studies on COVID-19. All studies included patients' smoking status with sample sizes ranging from 41 to 1099 patients. In all these studies, there was a higher

prevalence of both current and former smokers among more severe cases (patients who needed ICU support, mechanical ventilation or who had died; relative risk (RR): 2.4, IQR 1.43–4.04).³⁴

Another retrospective study conducted by Adrish *et al* analysed 1173 patients with COVID-19 and smoking habit available. Among them, 837 patients never smoked while 336 were either current or past smokers. In this analysis, smokers developed more critical illness requiring mechanical ventilation (47% vs 37% $p=0.005$). Univariate Cox model for survival showed that only current smokers had higher risk of death compared with never smokers (HR 1.61, 95% CI 1.22 to 2.12, $p<0.001$).³⁵

In our cohort, to clarify if the impact of smoking on COVID-19 outcome is rather linked to the smoking-related comorbidities, a multivariate logistic regression analysis was performed. After adjusting by confounding factors, mortality and severity (defined as the composite endpoint) were still higher among smokers compared with never smokers (multivariate analysis in table 2). Indeed, one of the most interesting findings in this work is the fact that active smokers, even if they presented less comorbidities than former smokers, presented the greatest risk of mortality and severity, once confounding factors were adjusted. Current smoking was found to be an independent predictor of mortality and poor prognosis in COVID-19. Former smokers presented a slightly increased risk of mortality (1.3-fold), but there were no statistically significant differences for the combined endpoint in contrast with non-smokers.

In our study, ex-smokers had a greater burden of comorbidities compared with the other two groups. It might explain a higher crude mortality rate among ex-smokers in comparison with active smokers.

Unlike our cohort, other studies did not include ex-smokers in their analysis.⁹ It is worth highlighting the importance of including ex-smokers, since both current and former smokers share characteristics and underlying respiratory comorbidities. Moreover, both groups have a similar expression of ACE2 receptors. Cai observed a higher ACE2 gene expression in the airway epithelia of healthy patients with a current or previous history of smoking compared with non-smokers.²⁸

Contrastingly, it has been widely questioned whether a history of smoking contributes to an increased risk of contracting COVID-19. An important mechanism of SARS-COV2 infection relates to the levels of ACE 2 proteins that are produced. While the hyperinnate inflammatory response is mainly related to the clinical course of the disease, this second mechanism may play a role in the susceptibility to infection. The ACE2 protein is expressed on the surface of lung type 2 pneumocytes and is the principal receptor molecule for SARS-CoV-2. Some authors have described decreased levels of ACE2 in smokers,^{26 27} which proposes a protective role of smoking. This mechanism suggests that in the ACE/ANG II/AT1R arm, nicotine increases the expression and activity of renin, ACE and AT1R, whereas in the compensatory

ACE2/ANG-(1-7)/MasR arm, nicotine downregulates the expression and activity of ACE2 and AT2R, thus suggesting a possible contribution of acetylcholine receptors in ACE2 regulation (nicotine).²⁷

A theoretical 'protective' role of tobacco in COVID-19 infection has been suggested. It is worth noting the lower rates of smoking observed in patients with COVID-19 in comparison with the general population. This may indicate a lower susceptibility to the infection in individuals with a smoking history.

Previous Chinese studies have shown low rates of current smokers among SARS-CoV-2-infected patients (1.4%–12.5%),^{5–15} lower than the reported prevalence of smoking in China (25.2%).¹⁶ Moreover, possible selection biases need to be considered. It is remarkable the median age of patients ranged from 38 to 59.7 years in the previously mentioned series.^{6–9–14} These ages are strikingly lower than expected results and differ notably from our cohort with a median age of 66 years (IQR 52.0–77.0).

Similarly, Miyara *et al* studied 482 patients with COVID-19 to evaluate smoker's susceptibility to develop SARS-CoV-2 infection. In their cohort, 4.4% of the hospitalised patients and 5.3% of outpatients were daily smokers. Finally, they compared these results with the French general population (daily smokers' rate of 25.4%). An increased susceptibility to SARS-COV2 infection in smokers was suggested.⁸

Since our study population is predominantly Spanish, we reviewed data regarding current smokers in Spain. These data have been reported by the Instituto Nacional de Estadística in 2017. The survey involved 29 195 individuals interviewed between October 2016 and October 2017. They were classified in daily smokers, occasional smokers, former smokers and non-smokers. Smoking prevalence in 2017 among men was approximately 25.6% and 18.8% in women. It is worth pointing out that these rates are notably higher than the smoking rates recorded in our Spanish cohort (5%). Although this imbalance draws attention, it should be considered that smoking status has been assessed only in hospitalised patients with COVID-19, thus symptomatic individuals fulfilling admission criteria. Since most COVID-19 studies have been performed in symptomatic patients, the smokers' lower susceptibility to have COVID-19 infection cannot be extrapolated from these data. Moreover, considering ex-smokers, the prevalence of current and former smokers reaches 21% in our cohort. This percentage approaches those observed in the general population.

Conversely, it has been suggested that ACE2 is upregulated in the airway epithelium of smokers.²³ As previously stated, increased levels of ACE2 gene expression have been reported in samples taken from smokers in comparison with non-smokers²⁸; thus, smokers may be more susceptible to SARS-CoV-2 infection. Similarly, in a study in resected lung specimens, Leung *et al* found an increased rate of ACE2 gene expression in smokers.²⁹

It remains to be seen if smokers are more prone to contracting SARS-CoV-2. Despite its relevance, the

current data do not answer this question. It is also worth noting that the true prevalence of COVID-19 infection rates in the general population is likely underestimated.

Limitations

In our study, only hospitalised patients with COVID-19 were evaluated; therefore, it is clear that these patients had a more severe clinical course.

Moreover, as this study is an observational study, there is the potential for bias, given the nature of the study design. It must be considered that many individuals may be asymptomatic, and it is not currently possible to establish the real prevalence of smoking among all COVID-19 cases.

Furthermore, another limitation of our study was the fact that the number of pack-years of smoking was not recorded in our database and, therefore, it was not possible to classify the patients following this interesting criterion. Likewise, the number smoke-free years was not available, which would have provided a more accurate classification of previous risk in former smokers.

CONCLUSIONS

In conclusion, current smoking has a detrimental impact on COVID-19 prognosis. A history of active smoking is related to worse COVID-19 outcomes, with increased risk of mortality and the combined event, after adjusting for comorbidities. Likewise, a greater risk of mortality was still found among former smokers, compared with non-smokers.

Author affiliations

- ¹Cardiology, Hospital Clínico Universitario San Carlos Instituto Cardiovascular, Madrid, Spain
- ²Cardiology/Internal Medicine, Hospital Clínico Universitario San Carlos Instituto Cardiovascular, Madrid, Spain
- ³Cardiology, University Hospital of Santiago de Compostela. Fundación IMAS, Galicia, Spain
- ⁴Cardiology, Hospital General Universitario de Guadalajara, Guadalajara, Spain
- ⁵Cardiology, Hospital La Paz, Madrid, Spain
- ⁶Cardiology, Hospital Clínico Universitario de Valladolid, Valladolid, Spain
- ⁷Cardiology/Emergency department, Hospital Universitario de Getafe, Madrid, Spain
- ⁸Cardiology, Hospital Universitario Clínica Puerta de Hierro, Madrid, Spain
- ⁹Cardiology, Hospital Severo Ochoa, Madrid, Spain
- ¹⁰Cardiology, Hospital Universitario Virgen de la Victoria; IBIMA. CIBERCV, Malaga, Spain
- ¹¹Cardiology, Policlinico di Bari Ospedale Giovanni XXIII, Bari, Italy
- ¹²Cardiology, Azienda Ospedaliero Universitaria San Luigi Gonzaga, Orbassano, Italy
- ¹³Cardiology, Hospital Alvaro Cunqueiro, Vigo, Spain
- ¹⁴Cardiology, Hospital Infanta Sofia, Madrid, Spain
- ¹⁵Cardiology, Hospital General del Norte de Guayaquil, Guayaquil, Ecuador
- ¹⁶Emergency department, Hospital Universitario Príncipe de Asturias, Madrid, Spain
- ¹⁷Cardiology, Instituto de Cardiología y Cirugía Cardiovascular, La Habana, Cuba
- ¹⁸Cardiology, Sant' Andrea Hospital, Rome, Italy
- ¹⁹Cardiology, Hospital de Manises, Manises, Spain
- ²⁰Cardiology, Hospital Nuestra Señora de América, Madrid, Spain
- ²¹Cardiology, University Hospital Heidelberg, Heidelberg, Germany
- ²²The Second Affiliated Hospital of Southern University of Science and Technology, Shenzhen, China
- ²³Cardiology, Hospital de Especialidades Fuerzas Armadas N 1, Quito, Ecuador
- ²⁴Pneumology, Hospital Clínico Universitario, Incliva. Universidad de Valencia, Valencia, Spain

Acknowledgements I would like to express my appreciation to Dr Breda Hennessey for her careful reading of the manuscript and thoughtful advice.

Collaborators HOPE-COVID-19 (Health Outcome Predictive Evaluation for COVID-19, NCT04334291) investigators.

Contributors All authors contributed to the data collection, critical revision of the article and final approval of the version to be published. Conception or design of the work and data analysis and interpretation: IN-G and CF. Drafting the article: CE-P and IN-G. Patients were not involved in the design of the study.

Funding The authors have not declared a specific grant for this research from any funding agency in the public, commercial or not-for-profit sectors.

Competing interests None declared.

Patient consent for publication Not required.

Ethics approval This study has been conducted in accordance with the Declaration of Helsinki principles and Good Clinical Practice Guidelines. It has been approved by ethics research committee from the Hospital Clínico San Carlos (Madrid, Spain) (20/241-E) and the Spanish Agency for Medicines and Health Products classification (EPA-OD). Due to the pandemic situation, it was not appropriate to involve patients or the public in the design of our research.

Provenance and peer review Not commissioned; externally peer reviewed by Sridhar Chilimuri, USA.

Data availability statement Data are available upon reasonable request (Health Outcome Predictive Evaluation for COVID-19 Registry).

Supplemental material This content has been supplied by the author(s). It has not been vetted by BMJ Publishing Group Limited (BMJ) and may not have been peer-reviewed. Any opinions or recommendations discussed are solely those of the author(s) and are not endorsed by BMJ. BMJ disclaims all liability and responsibility arising from any reliance placed on the content. Where the content includes any translated material, BMJ does not warrant the accuracy and reliability of the translations (including but not limited to local regulations, clinical guidelines, terminology, drug names and drug dosages), and is not responsible for any error and/or omissions arising from translation and adaptation or otherwise.

Open access This is an open access article distributed in accordance with the Creative Commons Attribution Non Commercial (CC BY-NC 4.0) license, which permits others to distribute, remix, adapt, build upon this work non-commercially, and license their derivative works on different terms, provided the original work is properly cited, appropriate credit is given, any changes made indicated, and the use is non-commercial. See: <http://creativecommons.org/licenses/by-nc/4.0/>.

ORCID iD

Carolina Espejo-Paeres <http://orcid.org/0000-0002-7196-9260>

REFERENCES

- WHO Director-General's opening remarks at the media briefing on COVID-19 - 11 March 2020. Available: <https://www.who.int>
- Li Y-C, Bai W-Z, Hashikawa T. The neuroinvasive potential of SARS-CoV2 may play a role in the respiratory failure of COVID-19 patients. *J Med Virol* 2020;92:552-5.
- Cao Y, Liu X, Xiong L, et al. Imaging and clinical features of patients with 2019 novel coronavirus SARS-CoV-2: a systematic review and meta-analysis. *J Med Virol* 2020;92:1449-59.
- Guan W-J, Ni Z-Y, Hu Y, et al. Clinical characteristics of coronavirus disease 2019 in China. *N Engl J Med* 2020;382:1708-20.
- Zhao Q, Meng M, Kumar R, et al. The impact of COPD and smoking history on the severity of COVID-19: a systemic review and meta-analysis. *J Med Virol* 2020;92:1915-21.
- Liu W, Tao Z-W, Wang L, et al. Analysis of factors associated with disease outcomes in hospitalized patients with 2019 novel coronavirus disease. *Chin Med J* 2020;133:1032-8.
- Lippi G, Henry BM. Active smoking is not associated with severity of coronavirus disease 2019 (COVID-19). *Eur J Intern Med* 2020;75:107-8.
- Miyara M, Tubach F, Martinez V. Low rate of daily smokers in patients with symptomatic COVID-19. *medRxiv* 2020.
- Huang C, Wang Y, Li X, et al. Clinical features of patients infected with 2019 novel coronavirus in Wuhan, China. *The Lancet* 2020;395:497-506.
- Yang X, Yu Y, Xu J, et al. Clinical course and outcomes of critically ill patients with SARS-CoV-2 pneumonia in Wuhan, China: a single-centered, retrospective, observational study. *Lancet Respir Med* 2020;8:475-81.
- Zhang J-J, Dong X, Cao Y-Y, et al. Clinical characteristics of 140 patients infected with SARS-CoV-2 in Wuhan, China. *Allergy* 2020;75:1730-41.
- Mo P, Xing Y, Xiao Y, et al. Clinical characteristics of refractory COVID-19 pneumonia in Wuhan, China. *Clin Infect Dis* 2020;270.
- Wan S, Xiang Y, Fang W, et al. Clinical features and treatment of COVID-19 patients in northeast Chongqing. *J Med Virol* 2020;92:797-806.
- Liu J, Ouyang L, Guo P. Epidemiological, clinical characteristics and outcome of medical staff infected with COVID-19 in Wuhan, China: a retrospective case series analysis. *medRxiv* 2020.
- Signes-Costa J, Núñez-Gil IJ, Soriano JB, et al. Prevalence and 30-day mortality in hospitalized patients with Covid-19 and prior lung diseases. *Archivos de Bronconeumología* 2021;57:13-20.
- Nan Y, Xi Z, Yang Y. The 2015 China adult tobacco survey: exposure to second-hand smoke among adults aged 15 and above and their support to policy on banning smoking in public places 2016;37:810-5.
- Garufi G, Carboognin L, Orlandi A, et al. Smoking habit and hospitalization for severe acute respiratory syndrome coronavirus 2 (SARS-CoV-2)-related pneumonia: The unsolved paradox behind the evidence. *Eur J Intern Med* 2020;77:121-2.
- Wong CK, Lam CWK, Wu AKL, et al. Plasma inflammatory cytokines and chemokines in severe acute respiratory syndrome. *Clin Exp Immunol* 2004;136:95-103.
- Ruan Q, Yang K, Wang W, et al. Clinical predictors of mortality due to COVID-19 based on an analysis of data of 150 patients from Wuhan, China. *Intensive Care Med* 2020;46:846-8.
- Chen N, Zhou M, Dong X, et al. Epidemiological and clinical characteristics of 99 cases of 2019 novel coronavirus pneumonia in Wuhan, China: a descriptive study. *The Lancet* 2020;395:507-13.
- Qiu F, Liang C-L, Liu H, et al. Impacts of cigarette smoking on immune responsiveness: up and Down or upside down? *Oncotarget* 2017;8:268-84.
- Shiels MS, Katki HA, Freedman ND, et al. Cigarette smoking and variations in systemic immune and inflammation markers. *J Natl Cancer Inst* 2014;106.
- Brake SJ, Barnsley K, Lu W, et al. Smoking upregulates angiotensin-converting enzyme-2 receptor: a potential adhesion site for novel coronavirus SARS-CoV-2 (Covid-19). *J Clin Med* 2020;9:841.
- Hamming I, Timens W, Bulthuis MLC, et al. Tissue distribution of ACE2 protein, the functional receptor for SARS coronavirus. A first step in understanding SARS pathogenesis. *J Pathol* 2004;203:631-7.
- Wrapp D, Wang N, Corbett KS, et al. Cryo-Em structure of the 2019-nCoV spike in the prefusion conformation. *Science* 2020;367:1260-3.
- Wan Y, Shang J, Graham R, et al. Receptor recognition by the novel coronavirus from Wuhan: an analysis based on decade-long structural studies of SARS coronavirus. *J Virol* 2020;94.
- Oakes JM, Fuchs RM, Gardner JD, et al. Nicotine and the renin-angiotensin system. *Am J Physiol Regul Integr Comp Physiol* 2018;315:R895-906.
- Cai G. Tobacco-Use disparity in gene expression of ACE2. *the Receptor of 2019-nCov* 2020 <https://www.preprints.org>
- Leung JM, Yang CX, Tam A, et al. ACE-2 expression in the small airway epithelia of smokers and COPD patients: implications for COVID-19. *Eur Respir J* 2020;55. doi:10.1183/13993003.00688-2020. [Epub ahead of print: 14 May 2020].
- Alraddadi BM, Watson JT, Almarashi A, et al. Risk factors for primary middle East respiratory syndrome coronavirus illness in humans, Saudi Arabia, 2014. *Emerg Infect Dis* 2016;22:49-55.
- Patanavanich R, Glantz SA. Smoking is associated with COVID-19 progression: a meta-analysis. *Nicotine Tob Res* 2020;22:1653-6.
- Jiménez-Ruiz CA, López-Padilla D, Alonso-Arroyo A. COVID-19 and smoking: a systematic review and meta-analysis of the evidence. *Arch Bronconeumol* 2021;57:21-34.
- Lowe KE, Zein J, Hatipoglu U, et al. Association of smoking and cumulative Pack-Year exposure with COVID-19 outcomes in the Cleveland clinic COVID-19 registry. *JAMA Intern Med* 2021;181:709-11.
- Vardavas CI, Nikitara K. COVID-19 and smoking: a systematic review of the evidence. *Tob Induc Dis* 2020;18:20.
- Adrish M, Chilimuri S, Mantri N, et al. Association of smoking status with outcomes in hospitalized patients with COVID-19. *BMJ Open Respir Res* 2020;7:e000716.

SUPPLEMENTARY MATERIAL

Table S1: Clinical presentation and analytical results according to smoking status.

SYMPTOMS n (%)	Smoker N=307	Ex-smoker N=934	Non-smoker N=3983	p value
Asymptomatic	35 (11.4) † *	35 (3.8)	189 (4.8)	p<0.001
Mild dyspnoea	66 (21.5)	243 (26.0)	1078 (27.1) ¥	
Moderate dyspnoea	54 (17.6)	207 (22.2)	794 (19.9)	
Severe dyspnoea	29 (9.4)	123 (13.2) *	346 (8.7)	
Tachypnoea	73 (24.3)	301 (33.7) * ¥	1004 (26.1)	p<0.001
Fatigue	126 (42.1)	444 (49.6) ¥	1797 (46.4)	p=0.059
Anosmia	49 (16.7) † *	47 (5.5)	261 (7.0)	p<0.001
Disgeusia	53 (18.0) † *	50 (5.8)	280 (7.5)	p<0.001
Sore throat	46 (15.6) †	79 (9.1)	471 (12.5) †	p=0.003
Fever	222 (73.0)	722 (78.6) ¥	3164 (80.3) ¥	p=0.007
Cough	200 (65.6)	623 (68.2)	2664 (67.8)	p=0.681
Vomiting	18 (6.0)	55 (6.1)	312 (8.1) †	p=0.074
Diarrhea	56 (18.7)	171 (19.1)	751 (19.5)	p=0.920
Myalgia	87 (28.8)	265 (29.7)	1288 (33.5) †	p=0.035
Oxygen saturation<92%	96 (31.9)	408 (45.0) * ¥	1309 (34.0)	p<0.001
ANALYTICAL RESULTS				
Elevated Ddimer	155 (57.4)	583 (72.4) * ¥	2129 (62.9)	p<0.001
Elevated procalcitonin	58 (24.7)	187 (28.4) *	567 (19.7)	p<0.001
Elevated CRP	253 (85.8)	839 (93.0) * ¥	3406 (88.4)	p<0.001
Elevated troponin	52 (27.8) † *	73 (17.2) *	255 (12.4)	p<0.001
Elevated transaminases	106 (37.7)	350 (41.3)	1463 (40.2)	p=0.573
Elevated ferritine	89 (47.3)	315 (62.6) ¥	1276 (59.3) ¥	p=0.001
Elevated triglycerides	52 (29.5)	80 (19.5) ¥	361 (19.8) ¥	p=0.008
Elevated LDH	153 (55.6) † *	630 (75.8)	2520 (71.8) †	p<0.001
Creatinine >1,5	82 (27.6)	188 (20.8) ¥	479 (12.5) † ¥	p<0.001
Lymphocytes <1500	160 (54.6) † *	728 (82.4)	2972 (77.9) †	p<0.001
Hemoglobin<12 gr/dl	97 (32.3)	241 (26.8)	991 (25.7) ¥	p=0.040
Platelets<150000	81 (27.1)	271 (30.0)	918 (23.8) †	p<0.001
<i>LDH; lactate dehydrogenase. CRP; C reactive protein. HB; hemoglobin. CR; creatinine. TN; troponin. Values are n (%). All p values were determined by using an analysis of variance with Bonferroni method. * p < 0.05 compared to non-smoker subjects. † p < 0.05 compared to ex-smokers. ¥ p<0.05 compared to smoker subjects.</i>				

Table S2: Treatment during in-hospital stay.

IN-HOSPITAL MANAGEMENT				
OXYGEN THERAPY n (%)	Smoker	Ex-Smoker	Non-smoker	p value
O ₂ at the admission	186 (61.0)	740 (81.3) * ¥	2744 (69.8) ¥	p<0.001
High flow nasal cannula	72 (23.8) *	199 (22.1) *	723 (18.7)	p=0.013
Non-invasive mechanical ventilation	43 (14.1)	159 (17.5) *	486 (12.5)	p<0.001
Invasive mechanical ventilation	26 (8.6)	91 (10.1) *	277 (7.2)	p=0.009
Prone position	22 (7.4)	136 (15.1) * ¥	374 (9.7)	p<0.001
Circulatory support or ECMO	13 (4.3)	61 (6.8) *	167 (4.3)	p=0.007
OTHER THERAPIES DURING THE ADMISSION, n (%)				
Use of glucocorticoids	75 (25.2)	328 (36.4) * ¥	1028 (26.5)	p<0.001
Use of hydroxychloroquine	256 (85.0)	794 (87.2) *	3296 (83.8)	p=0.04
Use of antiviral drugs	189 (62.6)	566 (62.2)	2299 (58.7)	p=0.08
Use of interferon	80 (26.8) † *	144 (16.1) *	451 (11.7)	p<0.001
Use of tocilizumab	26 (8.7)	93 (10.4) *	317 (8.2)	p=0.097
Use of antibiotics	210 (72.7)	704 (81.3) * ¥	2831 (75.8)	p=0.001
Use of ACEI /ARBs	75 (25.0) *	232 (26.3) *	644 (17.0)	p<0.001
Use of anticoagulants				p<0.001
PROFILACTIC	91 (48.1)	319 (58.6) ¥	1273 (55.2)	
<i>ECMO; extracorporeal membrane oxygenation. ACEI; Angiotensin-converting enzyme inhibitors. ARBs; Angiotensin II receptor blockers.</i>				
<i>Values are n (%). All p values were determined by using an analysis of variance with Bonferroni method. * p < 0.05 compared to non-smoker subjects. † p < 0.05 compared to ex-smokers. ¥ p < 0.05 compared to smoker subjects.</i>				

Table S3: Complications during in-hospital stay, including ICU admission and Prone position according to age.

COMPLICATIONS n (%)		SMOKING STATUS			p value
		Smoker N=307	Former smoker N=934	Non-smoker N=3983	
Hypotension		25 (8.5)	81 (9.6) *	262 (7.2)	p=0.057
Respiratory insufficiency		140 (46.1)	576 (62.8) * ¥	1908 (48.5)	p<0.001
Heart failure		19 (6.3)	104 (11.5) * ¥	213 (5.4)	p<0.001
Renal failure		57 (18.9) *	222 (24.4) * ¥	559 (14.3)	p<0.001
URTI		31 (10.3)	130 (14.6) *	467 (12.1)	p=0.069
Sepsis		71 (23.6) † *	132 (14.6) *	375 (9.6)	p<0.001
SIRS		48 (15.9)	235 (26.2) * ¥	743 (19.1)	p<0.001
Bilateral pneumonia		158 (51.5)	702 (75.2) * ¥	2804 (70.4) ¥	p<0.001
Unilateral pneumonia		70 (22.8) † *	126 (13.5)	635 (15.9)	
Relevant bleeding		12 (4.0)	34 (3.8) *	92 (2.4)	p=0.024
Hemoptysis		14 (4.6) *	24 (2.7) *	53 (1.4)	p<0.001
Embolic events		13 (4.3) *	30 (3.3) *	66 (1.7)	p<0.001
Skin rash		22 (10.0) † *	16 (2.6)	61 (2.2)	p<0.001
ICU ADMISSION		30 (9.9)	82 (8.9)	230 (5.9)	p<0.001
Age	<52	7 (8.0)	6 (6.7)	60 (5.2)	p=0.45
	52-66	18 (15.8)	23 (9.9)	86 (8.9)	p=0.06
	66-77	3 (4.5)	41 (11.8)	73 (8.5)	p=0.07
	>77	2 (5.4)	12 (4.8)	11 (1.2)	p=0.001
PRONE POSITION		22 (7.4)	134 (15.2)	368 (9.7)	p<0.001
Age	<52	7 (8)	8 (9.3)	89 (7.9)	p=0.89
	52-66	6 (5.4)	28 (12.6)	119 (12.7)	p=0.07
	66-77	6 (9.1)	71 (21.2)	112 (13.4)	p=0.001
	>77	3 (9.1)	27 (11.2)	48 (5.3)	p=0.04

*SIRS: systemic inflammatory response syndrome; URTI: upper respiratory tract infection. Hypotension: systolic pressure <90 mmHg. Values are n (%). P values were determined by using an analysis of variance with Bonferroni method. * p < 0.05 compared to non-smoker subjects. † p < 0.05 compared to ex-smokers. ¥ p<0.05 compared to smoker subjects.*

Table S4: All-cause in-hospital death according to three different smoking patterns, stratified by age.

ALL-CAUSE DEATH n (%)	Smoking status			P value
	Current smoker N=307	Ex-smoker N=934	Non-smoker N=3983	
n=1336 <52	4 (4.6%)	9 (10%)	52 (4.5%)	p=0.06
n=1312 52-66	13 (11.4%)	28 (12.1%)	92 (9.5%)	p=0.46
n=1276 66-77	25 (37.9%)	109 (31.4%)	161 (18.7%)	p<0.001
n=1217 >77	19 (51.4%)	129 (52%)	418 (44.8%)	p=0.11
All patients (n=5141)	61 (20.1%)	275 (30%)	723 (18.4%)	p<0.001

Table S5. All-cause in-hospital mortality and the combined endpoint (ICU admission, prone, death).

IN-HOSPITAL OUTCOMES n (%)	Current smoker and former smoker n=1241	Non-smoker n=3983	p value
ALL-CAUSE DEATH /5224	343 (27.6)	734 (18.4)	p<0.001
ICU ADMISSION	114 (9.2)	234 (5.9)	p<0.001
PRONE POSITION	158 (13.2)	374 (9.7)	p=0.001
COMBINED ENDPOINT/5100 (Death, prone, ICU admission)	439 (36.2)	1013 (26.1)	p<0.001

Table S6: Propensity scores for mortality and the combined endpoint. Smokers (current or former) vs. never smokers.

Propensity score			
	OR	95% CI	p
All-cause death	1.04	0.99-1.07	p=0.06
Combined endpoint*	1.05	1.00-1.10	p=0.03
<i>*all-cause death, prone position, ICU admission.</i>			



INTERNATIONAL COVID-19 CLINICAL EVALUATION REGISTRY:

HOPE-2.

(Health Outcome Predictive Evaluation for COVID 19- 2)

PROTOCOL VERSION 2

ENGLISH VERSION.

NCT04778020

INTRODUCTION.

Since December 2019, when a new respiratory virus (coronavirus) designated as SARS-CoV-2 was detected in China, millions of people worldwide have been infected. This condition was named coronavirus 2019 disease (COVID-19) and has produced a pandemic with millions of casualties.

With an increasing number of confirmed cases in most countries worldwide, it is responsible for a relevant morbidity and mortality and has motivated the implementation of measures at national and international levels with a great impact on the way of life of people throughout the whole planet.

One year after the beginning of the outbreak, several reports and trials have been produced reporting important data about the acute phase of the disease. In this field the International registry HOPE COVID-19 (NCT04334291) has provided several publications with collaborative data from more than 45 centers in 9 countries.

The registry, as well, produced an online mortality calculator based in a few clinical variables (<https://hopeprojectmd.com/en/tool>).

However, limited follow-up information is available and the existing evidence point out frequent lasting effects after the acute phase of COVID-19. This persistent condition has been baptized by several authors with different terms such Post-acute COVID-19, Persistent COVID-19, Post COVID- syndrome, Long haulers, Long COVID-19, etc..

Since COVID-19 have involved and unprecedented numbers of people is possible the sequelae would be important form the socioeconomic and scientific point of view.

Thus, we propose here the international Registry HOPE 2, aiming to produce clinically relevant data regarding the longstanding outcomes after discharge after COVID-19.

PURPOSE.

HOPE2_v2_Last review 14.02.2021



The main objective of the present study is to carefully characterize the clinical profile of individuals with lasting sequelae after a COVID-19 admission.

As secondary objectives, the analysis of the risk-adjusted influence of COVID-19 severity, previous comorbidities and management of patients discharged after COVID-19 will be performed.

DESIGN AND STATISTICAL ANALYSIS

Cross-sectional and prospective registry, a real life “all comers” type, with voluntary participation, without specific funding or conflicts of interest.

It is a study initiated by researcher that will have advanced statistical support from the IMAS foundation (Institute for the Improvement of Health Care, Madrid, Spain) and the Fundación para la Investigación Cardiovascular (FIC, Madrid, Spain).

International level.

PARTICIPANTS PROTOCOL.

The study has been approved by Hospital Clínico San Carlos Ethic’s Committee (**21/128-E**) and the institutional board of each participating center.

The present study proposes the continuation in time of the work previously carried out in the HOPE registry.

We propose to select all the patients attended in any health center (with in hospital beds), who have been discharged or have died up to 30th september 2020.

All will be considered eligible with a positive COVID 19 test (any type) or if their attending physicians consider them highly likely to have presented the infection.

Given the anonymous characteristics of the registry and the health alarm situation generated by the virus, in principle, it is not considered necessary to provide written informed consent.

- **Inclusion criteria**

Patients discharged (deceased or alive) from any hospital center with a confirmed diagnosis or a COVID-19 high suspicion.

There are no exclusion criteria, except for the patient's explicit refusal to participate.

HOPE2_v2_Last review 14.02.2021



Same inclusion/exclusion as HOPE COVID-19. We propose the long-term follow-up of patients discharged after a COVID-19 admission up to 30th september 2020.

Consecutive inclusion and the completion of patients previously included in HOPE registry is strongly warranted.

DATA BASE.

An anonymized HOPE 2 database is presented, in electronic format, to be filled in at each participating center (www.HopeProjectMD.com).

In theory, most information could be obtained from electronic records (medical history).

Probably, the investigator should call or use in office visits in order to establish the vital the long-term management and follow-up outcomes (warranted).

For variables definition, please see protocol appendix.

SAMPLE SIZE.

We consider it would not be possible to estimate for the sample size based on literature reports. Thus, HOPE2 will aim to get the maximum numbers of patients possible.

Researchers are warranted to recruit their patients in a consecutive manner.

OUTCOMES.

Primary: All-cause mortality. The major contributors of increased mortality will be assessed.

Secondary: Cause of death and Outcomes after discharge.

See protocol appendix for precise definitions.

Depending the results of the main interim analysis, the main DB could be slightly modified and several sub analyses could be proposed after sensitivity analyses.

The objectives and event variables would vary with the precise analysis performed.

RESEARCHERS AND AUTHORSHIP.

Following HOPE rules, to avoid potential duplicates, an unique online account is accepted per hospital. Within each center, the researchers will decide themselves the main researcher (maximum 2 principal investigators,) and the collaborators (maximum 15).

HOPE2_v2_Last review 14.02.2021



They are accepted as collaborators, physicians, nurses, students, and other personnel under the supervision of local MD/DO/PhD investigators.

The order of authorship will be established based on the recruitment (valid cases) in HOPE 2. All study researchers and collaborators will be included in the HOPE 2 group.

HOPE or HOPE 2 are not audited records, so each researcher is responsible and vouch for the veracity and accuracy of their included data.

The database will be made available to participating researchers who wish to carry out sub-analyses of their interest, upon reasonable request.

PRELIMINARY AGENDA AND ROADMAP.

10th February 2021: Research Ethics committee approval.

February-15th March: DB design and preparation.

15-25th March 2021: National and international invitations to participate submission.

15-31st March 2021: Activation of HOPE 2 study invitation links. Once participation in the study is approved, your center will be registered and the researcher will be able to set a login and password. Then, you could enter the data on the web. For center previously participating in HOPE, the researcher's account will be reactivated.

May 2021: DB exportation. Query resolution phase. Interim analysis.

16-30th June: Analysis and development of statistical models, (propensity scores, etc.).

30th June- 15th July 2021: preliminary results.

31st september 2021: Final HOPE 2 enrollment period.

1-15th October: DB exportation. Query resolution phase. DB closure.

15th October-15th november 2021: Analysis and development of statistical models. Manuscripts.

January 2022: Final HOPE 2 results.

The final date of registration/follow up is sept 31st, 2021

SCIENTIFIC COORDINATION: Iván J. Núñez-Gil, MD, PhD. Carlos Macaya, MD, PhD.

SCIENTIFIC COMMITTEE AND LIST OF PARTICIPATING HOSPITALS: Available updated at www.HopeProjectMD.com.

HOPE2_v2_Last review 14.02.2021



COORDINATOR CENTRE: HOSPITAL CLINICO SAN CARLOS, MADRID, SPAIN.

PROMOTER: Fundación interhospitalaria para la Investigación cardiovascular, **FIC**. Paseo del Pintor Rosales, N18, izq. 28008, Madrid. Spain. CIF: G-81563801.

PI'S REFERENCES ON COVID-19, UPDATED TO MARCH 2021.

1: Cormican DS, Winter D, McHugh S, Sonny A, Crowley J, Yu R, Barrack F, Núñez-Gil JJ, Ramakrishna H. Severe Acute Respiratory Syndrome Coronavirus-2 Cardiovascular Complications: Implications for Cardiothoracic Anesthesiology. *J Cardiothorac Vasc Anesth*. 2021 Mar;35(3):932-943. doi: 10.1053/j.jvca.2020.05.035. Epub 2020 Jun 3. PMID: 32601001; PMCID: PMC7836849.

2: Uribarri A, Núñez-Gil JJ, Aparisi A, Becerra-Muñoz VM, Feltes G, Trabattani D, Fernández-Rozas I, Viana-Llamas MC, Pepe M, Cerrato E, Capel-Astrua T, Romero R, Castro-Mejía AF, El-Battrawy I, López-País J, D'Ascenzo F, Fabregat-Andres O, Bardají A, Raposeiras-Roubin S, Marín F, Fernández-Ortiz A, Macaya C, Estrada V; HOPE COVID-19 Investigators. Impact of renal function on admission in COVID-19 patients: an analysis of the international HOPE COVID-19 (Health Outcome Predictive Evaluation for COVID 19) Registry. *J Nephrol*. 2020 Aug;33(4):737-745. doi: 10.1007/s40620-020-00790-5. Epub 2020 Jun 29. PMID: 32602006; PMCID: PMC7322375.

3: Núñez-Gil JJ, Estrada V, Fernández-Pérez C, Fernández-Rozas I, Martín-Sánchez FJ, Macaya C. The COVID-19 curve, health system overload, and mortality. *Emergencias*. 2020 Ago;32(4):293-295. English, Spanish. PMID: 32692012.

4: Bianco M, Biolè CA, Campagnuolo S, Pietrangiulillo F, Spirito A, Galluzzo A, Nuñez-Gil I, Destefanis P, Luciano A, Carvalho P, Varalda GP, Previti A, Gravellone M, Travieso Gonzalez A, Ugo F, Pivano G, Rametta F, Perboni A, Pozzi

HOPE2_v2_Last review 14.02.2021



R, Montagna L, Cerrato E. COVID-19 therapies and their impact on QT interval prolongation: A multicentre retrospective study on 196 patients. *Int J Cardiol Heart Vasc.* 2020 Oct;30:100637. doi: 10.1016/j.ijcha.2020.100637. Epub 2020 Sep 11. PMID: 32953967; PMCID: PMC7486053.

5: Núñez-Gil IJ, Estrada V, Fernández-Pérez C, Feltes G, Vedia O, Vergara-Uzategui CE, Moreno-Menguía VH, Cerrato E, D'Ascenzo F, Raposeiras-Roubin S, Martín-Sánchez FJ, Alfonso-Rodríguez E, Huang J, Ramakrishna H, Gil-Higes E, Fernández-Ortiz A, Macaya C. Health Outcome Predictive Evaluation for COVID 19 international registry (HOPE COVID-19), rationale and design. *Contemp Clin Trials Commun.* 2020 Dec;20:100654. doi: 10.1016/j.conctc.2020.100654. Epub 2020 Sep 23. PMID: 32989425; PMCID: PMC7510540.

6: Rivera-Caravaca JM, Núñez-Gil IJ, Vivas D, Viana-Llamas MC, Uribarri A, Becerra-Muñoz VM, Trabattoni D, Fernández Rozas I, Feltes G, López-Pais J, El-Battrawy I, Macaya C, Fernandez-Ortiz A, Estrada V, Marín F; HOPE COVID-19 Investigators. Clinical profile and prognosis in patients on oral anticoagulation before admission for COVID-19. *Eur J Clin Invest.* 2021 Jan;51(1):e13436. doi: 10.1111/eci.13436. Epub 2020 Nov 7. PMID: 33080051; PMCID: PMC7645931.

7: Núñez-Gil IJ, Fernández-Pérez C, Estrada V, Becerra-Muñoz VM, El-Battrawy I, Uribarri A, Fernández-Rozas I, Feltes G, Viana-Llamas MC, Trabattoni D, López-Pais J, Pepe M, Romero R, Castro-Mejía AF, Cerrato E, Astrua TC, D'Ascenzo F, Fabregat-Andres O, Moreu J, Guerra F, Signes-Costa J, Marín F, Buosenso D, Bardají A, Raposeiras-Roubin S, Elola J, Molino Á, Gómez-Doblas JJ, Abumayyaleh M, Aparisi Á, Molina M, Guerri A, Arroyo-Espliguero R, Assanelli E, Mapelli M, García-Acuña JM, Brindicci G, Manzone E, Ortega-Armas ME, Bianco M, Trung CP, Núñez MJ, Castellanos-Lluch C, García-Vázquez E, Cabello-Clotet N, Jamhour-Chelh K, Tellez MJ, Fernández-Ortiz A, Macaya C; HOPE COVID-19 Investigators. Mortality risk assessment in Spain and Italy, insights of the HOPE COVID-19 registry. *Intern Emerg Med.* 2020 Nov 9:1–10. doi: 10.1007/s11739-020-02543-5.

HOPE2_v2_Last review 14.02.2021



Epub ahead of print. PMID: 33165755; PMCID: PMC7649104.

8: Becerra-Muñoz VM, Núñez-Gil IJ, Eid CM, García Aguado M, Romero R, Huang J, Mulet A, Ugo F, Rametta F, Liebetrau C, Aparisi A, Fernández-Rozas I, Viana-Llamas MC, Feltes G, Pepe M, Moreno-Rondón LA, Cerrato E, Raposeiras-Roubín S, Alfonso E, Carrero-Fernández A, Buzón-Martín L, Abumayyaleh M, Gonzalez A, Fernández Ortiz A, Macaya C, Estrada V, Fernández-Pérez C, Gómez-Doblas JJ. Clinical profile and predictors of in-hospital mortality among older patients hospitalised for COVID-19. *Age Ageing*. 2021 Feb 26;50(2):326-334. doi: 10.1093/ageing/afaa258. PMID: 33201181; PMCID: PMC7717146.

9: Ruiz-Sánchez JG, Núñez-Gil IJ, Cuesta M, Rubio MA, Maroun-Eid C, Arroyo-Espliguero R, Romero R, Becerra-Muñoz VM, Uribarri A, Feltes G, Trabattoni D, Molina M, García Aguado M, Pepe M, Cerrato E, Alfonso E, Castro Mejía AF, Roubin SR, Buzón L, Bondia E, Marin F, López Pais J, Abumayyaleh M, D'Ascenzo F, Rondano E, Huang J, Fernandez-Perez C, Macaya C, de Miguel Novoa P, Calle-Pascual AL, Estrada Perez V, Runkle I; HOPE COVID-19 investigators. Prognostic Impact of Hyponatremia and Hypernatremia in COVID-19 Pneumonia. A HOPE-COVID-19 (Health Outcome Predictive Evaluation for COVID-19) Registry Analysis. *Front Endocrinol (Lausanne)*. 2020 Nov 30;11:599255. doi: 10.3389/fendo.2020.599255. PMID: 33329400; PMCID: PMC7734292.

10: Núñez-Gil IJJ, Fernández-Ortiz A, Maroud Eid C, Huang J, Romero R, Becerra-Muñoz VM, Uribarri A, Feltes G, Trabattoni D, Fernandez-Rozas I, Viana-Llamas MC, Pepe M, Cerrato E, Bertaina M, Capel Astrua T, Alfonso E, Castro-Mejía AF, Raposeiras-Roubin S, D'Ascenzo F, Espejo Paeres C, Signes-Costa J, Bardaji A, Fernandez-Pérez C, Marin F, Fabregat-Andres O, Akin I, Estrada V, Macaya C. Underlying heart diseases and acute COVID-19 outcomes. *Cardiol J*. 2020 Dec 21. doi: 10.5603/CJ.a2020.0183. Epub ahead of print. PMID: 33346365.

11: Signes-Costa J, Núñez-Gil IJ, Soriano JB, Arroyo-Espliguero R, Eid CM, Romero R, Uribarri A, Fernández-Rozas I, Aguado MG, Becerra-Muñoz VM, Huang J,

HOPE2_v2_Last review 14.02.2021



Pepe M, Cerrato E, Raposeiras S, Gonzalez A, Franco-Leon F, Wang L, Alfonso E,

Ugo F, García-Prieto JF, Feltes G, Abumayyaleh M, Espejo-Paeres C, Jativa J,

Masjuan AL, Macaya C, Carbonell Asíns JA, Estrada V; HOPE COVID-19

investigators. Prevalence and 30-Day Mortality in Hospitalized Patients With

Covid-19 and Prior Lung Diseases. Arch Bronconeumol. 2020 Dec

16:S0300-2896(20)30535-4. doi: 10.1016/j.arbres.2020.11.012. Epub ahead of

print. PMID: 33423874; PMCID: PMC7744014.

12: Pepe M, Maroun-Eid C, Romero R, Arroyo-Espliguero R, Fernández-Rozas I,

Aparisi A, Becerra-Muñoz VM, García Aguado M, Brindicci G, Huang J, Alfonso-

Rodríguez E, Castro-Mejía AF, Favretto S, Cerrato E, Albiol P, Raposeiras-Roubin

S, Vedia O, Feltes Guzmán G, Carrero-Fernández A, Perez Cimarra C, Buzón L,

Jativa Mendez JL, Abumayyaleh M, Corbi-Pascual M, Macaya C, Estrada V, Nestola

PL, Biondi-Zoccai G, Núñez-Gil IJ. Clinical presentation, therapeutic approach,

and outcome of young patients admitted for COVID-19, with respect to the elderly

counterpart. Clin Exp Med. 2021 Feb 8:1–20. doi: 10.1007/s10238-021-00684-1.

Epub ahead of print. PMID: 33555436; PMCID: PMC7868661.

13: Uribarri A, Núñez-Gil IJ, Aparisi Á, Arroyo-Espliguero R, Maroun Eid C,

Romero R, Becerra-Muñoz VM, Feltes G, Molina M, García-Aguado M, Cerrato E,

Capel-Astrua T, Alfonso-Rodríguez E, Castro-Mejía AF, Raposeiras-Roubín S,

Espejo C, Pérez-Solé N, Bardají A, Marín F, Fabregat-Andrés Ó, D'ascenzo F,

Santoro F, Akin I, Estrada V, Fernández-Ortiz A, Macaya C; HOPE COVID-19

investigators. Atrial fibrillation in patients with COVID-19. Usefulness of the

CHA₂DS₂-VASc score: an analysis of the international HOPE

COVID-19 registry. Rev Esp Cardiol (Engl Ed). 2021 Jan 13:S1885-5857(21)00001-3.

doi: 10.1016/j.rec.2020.12.009. Epub ahead of print. PMID: 33583755; PMCID:

PMC7836821.

14: Viana-Llamas MC, Arroyo-Espliguero R, Silva-Obregón JA, Uribe-Heredia G,

Núñez-Gil I, García-Magallón B, Torán-Martínez CG, Castillo-Sandoval A, Díaz-

Carballo E, Rodríguez-Guinea I, Domínguez-López J. Hypoalbuminemia on admission

HOPE2_v2_Last review 14.02.2021



in COVID-19 infection: An early predictor of mortality and adverse events. A

retrospective observational study. *Med Clin (Barc)*. 2021 Jan

28:S0025-7753(21)00032-4. doi: 10.1016/j.medcli.2020.12.018. Epub ahead of

print. PMID: 33627230; PMCID: PMC7843155.

15: Porta-Etessam J, Núñez-Gil IJ, González García N, Fernandez-Perez C, Viana-Llamas MC, Eid CM, Romero R, Molina M, Uribarri A, Becerra-Muñoz VM, Aguado MG, Huang J, Rondano E, Cerrato E, Alfonso E, Mejía AFC, Marin F, Roubin SR, Pepe M, Feltes G, Maté P, Cortese B, Buzón L, Mendez JJ, Estrada V. COVID-19 anosmia and gustatory symptoms as a prognosis factor: a subanalysis of the HOPE COVID-19 (Health Outcome Predictive Evaluation for COVID-19) registry. *Infection*. 2021 Mar 1:1–8. doi: 10.1007/s15010-021-01587-9. Epub ahead of print. PMID: 33646505; PMCID: PMC7917537.

16: Salgado-Aranda R, Pérez-Castellano N, Núñez-Gil I, Orozco AJ, Torres-Esquivel N, Flores-Soler J, Chamaisse-Akari A, McInerney A, Vergara-Uzategui C, Wang L, González-Ferrer JJ, Filgueiras-Rama D, Cañadas-Godoy V, Macaya-Miguel C, Pérez-Villacastín J. Influence of Baseline Physical Activity as a Modifying Factor on COVID-19 Mortality: A Single-Center, Retrospective Study. *Infect Dis Ther*. 2021 Mar 14:1–14. doi: 10.1007/s40121-021-00418-6. Epub ahead of print. PMID: 33715099; PMCID: PMC7955903.

17: Ayerbe L, Risco-Risco C, Núñez-Gil I, Perez-Piñar M, Ayis S. Hydroxychloroquine treatment does not reduce COVID-19 mortality; underdosing to the wrong patients? *Lancet Rheumatol*. 2021 Mar;3(3):e172. doi: 10.1016/S2665-9913(21)00031-X. Epub 2021 Jan 27. PMID: 33655225; PMCID: PMC7906731.

18: Bertaina M, Nuñez-Gil IJ, Franchin L, Fernández Rozas I, Arroyo-Espliguero R, Viana-Llamas MC, Romero R, Maroun Eid C, Uribarri A, Becerra-Muñoz VM, Huang J, Alfonso E, Marmol-Mosquera F, Ugo F, Cerrato E, Fernandez-Presa L, Raposeiras Roubin S, Feltes Guzman G, Gonzalez A, Abumayyaleh M, Fernandez-Ortiz A, Macaya

HOPE2_v2_Last review 14.02.2021



C, Estrada V; HOPE COVID-19 investigators. Non-invasive ventilation for SARS-CoV-2 acute respiratory failure: a subanalysis from the HOPE COVID-19 registry. *Emerg Med J.* 2021 Mar 16;emermed-2020-210411. doi: 10.1136/emermed-2020-210411. Epub ahead of print. PMID: 33727235.

19: Uribarri A, Núñez-Gil IJ, Aparisi Á, Arroyo-Espliguero R, Eid CM, Romero R, Becerra-Muñoz VM, Feltes G, Molina M, García-Aguado M, Cerrato E, Capel-Astrua T, Alfonso-Rodríguez E, Castro-Mejía AF, Raposeiras-Roubín S, Espejo C, Pérez-Solé N, Bardají A, Marín F, Fabregat-Andrés Ó, D'ascenzo F, Santoro F, Akin I, Estrada V, Fernández-Ortiz A, Macaya C; en representación de los investigadores del HOPE COVID-19. Fibrilación auricular en pacientes con COVID-19. Utilidad de la puntuación CHA2DS2-VASc: un análisis del registro internacional HOPE COVID-19 [Atrial fibrillation in patients with COVID-19. Usefulness of the CHA2DS2-VASc score: an analysis of the international HOPE COVID-19 registry]. *Rev Esp Cardiol.* 2021 Mar 2. Spanish. doi: 10.1016/j.recesp.2020.12.014. Epub ahead of print. PMID: 33678938; PMCID: PMC7923850.

20: Salinas P, Travieso A, Vergara-Uzategui C, Tirado-Conte G, Macaya F, Mejía-Rentería H, Nombela-Franco L, Núñez-Gil IJ, Gonzalo N, Jiménez-Quevedo P, Pérez-Vizcayno MJ, Escaned J, Fernández-Ortiz A. Clinical Profile and 30-Day Mortality of Invasively Managed Patients with Suspected Acute Coronary Syndrome During the COVID-19 Outbreak. *Int Heart J.* 2021 Mar 17. doi: 10.1536/ihj.20-574. Epub ahead of print. PMID: 33731529.

HOPE2_v2_Last review 14.02.2021